

CSTF2 Antibody

Catalog No: #33754



Package Size: #33754-1 50ul #33754-2 100ul

Orders: order@signalwayantibody.com
Support: tech@signalwayantibody.com

Description

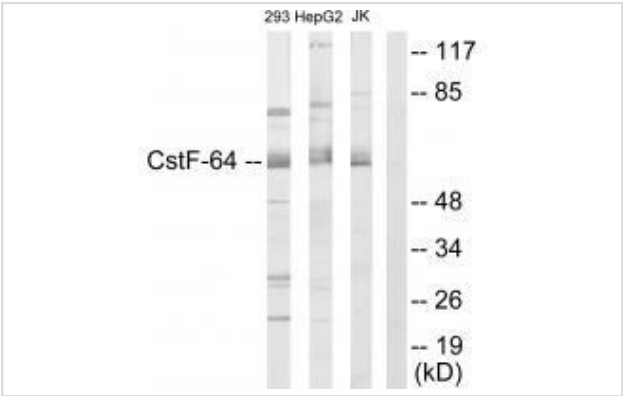
Product Name	CSTF2 Antibody
Host Species	Rabbit
Clonality	Polyclonal
Purification	The antibody was affinity-purified from rabbit antiserum by affinity-chromatography using epitope-specific immunogen.
Applications	WB IF
Species Reactivity	Hu Ms
Specificity	The antibody detects endogenous levels of total CSTF2 protein.
Immunogen Type	Peptide
Immunogen Description	Synthesized peptide derived from N-terminal of human CSTF2.
Target Name	CSTF2
Other Names	CF-1 64 kDa; CSTF 64 kDa; CstF-64; cleavage stimulation factor subunit 2; cleavage stimulation factor
Accession No.	Swiss-Prot: P33240NCBI Gene ID: 1478
SDS-PAGE MW	60kd
Concentration	1.0mg/ml
Formulation	Rabbit IgG in phosphate buffered saline (without Mg2+ and Ca2+), pH 7.4, 150mM NaCl, 0.02% sodium azide and 50% glycerol.
Storage	Store at -20°C

Application Details

Western blotting: 1:500~1:3000

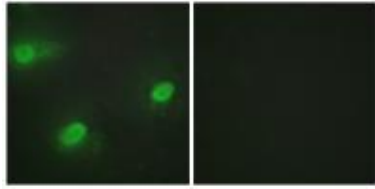
Immunofluorescence: 1:100~1:500

Images



Western blot analysis of extracts from 293 cells, HepG2 cells and Jurkat cells, using CSTF2 antibody #33754.

Immunofluorescence analysis of HeLa cells, using CSTF2 antibody #33754.



Background

One of the multiple factors required for polyadenylation and 3'-end cleavage of mammalian pre-mRNAs. This subunit is directly involved in the binding to pre-mRNAs By similarity.

Takagaki Y., Proc. Natl. Acad. Sci. U.S.A. 89:1403-1407(1992).

Ross M.T., Nature 434:325-337(2005).

Takagaki Y., Mol. Cell. Biol. 17:3907-3914(1997).

Note: This product is for in vitro research use only and is not intended for use in humans or animals.