

CKS2 Antibody

Catalog No: #33755

Package Size: #33755-1 50ul #33755-2 100ul

Orders: order@signalwayantibody.comSupport: tech@signalwayantibody.com

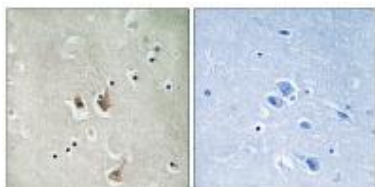
Description

Product Name	CKS2 Antibody
Host Species	Rabbit
Clonality	Polyclonal
Purification	The antibody was affinity-purified from rabbit antiserum by affinity-chromatography using epitope-specific immunogen.
Applications	IHC
Species Reactivity	Hu
Specificity	The antibody detects endogenous levels of total CKS2 protein.
Immunogen Type	Peptide
Immunogen Description	Synthesized peptide derived from internal of human CKS2.
Target Name	CKS2
Other Names	Cyclin-dependent kinases regulatory subunit 2; CKS-2; CKS2;
Accession No.	Swiss-Prot: P33552NCBI Gene ID: 1164
SDS-PAGE MW	10kd
Concentration	1.0mg/ml
Formulation	Rabbit IgG in phosphate buffered saline (without Mg ²⁺ and Ca ²⁺), pH 7.4, 150mM NaCl, 0.02% sodium azide and 50% glycerol.
Storage	Store at -20°C

Application Details

Immunohistochemistry: 1:50~1:100

Images



Immunohistochemistry analysis of paraffin-embedded human brain tissue, using CKS2 antibody #33755.

Background

Binds to the catalytic subunit of the cyclin dependent kinases and is essential for their biological function.

Richardson H.E., Genes Dev. 4:1332-1344(1990).

The MGC Project Team, Genome Res. 14:2121-2127(2004).

Parge H.E., Science 262:387-395(1993).

Note: This product is for in vitro research use only and is not intended for use in humans or animals.