

## K6PP Antibody

Catalog No: #33843

Package Size: #33843-1 50ul #33843-2 100ul

Orders: [order@signalwayantibody.com](mailto:order@signalwayantibody.com)Support: [tech@signalwayantibody.com](mailto:tech@signalwayantibody.com)

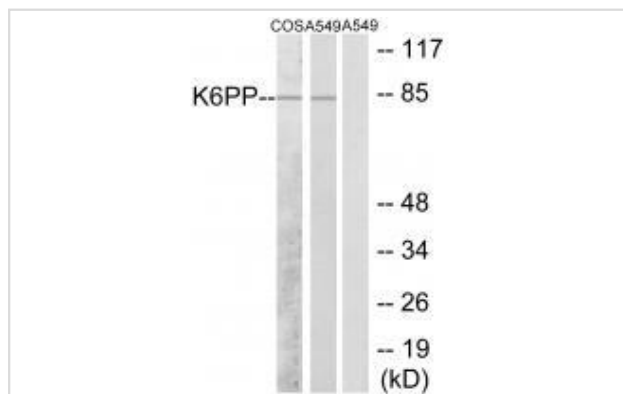
## Description

Product Name	K6PP Antibody
Host Species	Rabbit
Clonality	Polyclonal
Purification	The antibody was affinity-purified from rabbit antiserum by affinity-chromatography using epitope-specific immunogen.
Applications	WB
Species Reactivity	Hu Ms Rt
Specificity	The antibody detects endogenous levels of total K6PP protein.
Immunogen Type	Peptide
Immunogen Description	Synthesized peptide derived from internal of human K6PP.
Target Name	K6PP
Other Names	6-phosphofructokinase type C; 6-phosphofructokinase; platelet type; EC 2.7.1.11; K6PP
Accession No.	Swiss-Prot: Q01813NCBI Gene ID: 5214
SDS-PAGE MW	84kd
Concentration	1.0mg/ml
Formulation	Rabbit IgG in phosphate buffered saline (without Mg <sup>2+</sup> and Ca <sup>2+</sup> ), pH 7.4, 150mM NaCl, 0.02% sodium azide and 50% glycerol.
Storage	Store at -20°C

## Application Details

Western blotting: 1:500~1:3000

## Images



Western blot analysis of extracts from COS-7 cells and A549 cells, using K6PP antibody #33843.

## Background

Catalyzes the phosphorylation of D-fructose 6-phosphate to fructose 1,6-bisphosphate by ATP, the first committing step of glycolysis. HAMAP-Rule

MF\_03184

Eto K., Biochem. Biophys. Res. Commun. 198:990-998(1994).

Simpson C.J., Biochem. Biophys. Res. Commun. 180:197-203(1991).

Beausoleil S.A., Proc. Natl. Acad. Sci. U.S.A. 101:12130-12135(2004).

---

Note: This product is for in vitro research use only and is not intended for use in humans or animals.