

K0100 Antibody

Catalog No: #33883

Package Size: #33883-1 50ul #33883-2 100ul

Orders: order@signalwayantibody.comSupport: tech@signalwayantibody.com

Description

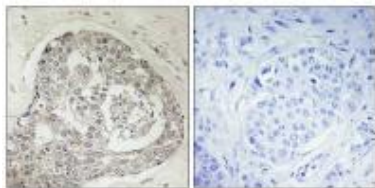
Product Name	K0100 Antibody
Host Species	Rabbit
Clonality	Polyclonal
Purification	The antibody was affinity-purified from rabbit antiserum by affinity-chromatography using epitope-specific immunogen.
Applications	IHC IF
Species Reactivity	Hu
Specificity	The antibody detects endogenous levels of total K0100 protein.
Immunogen Type	Peptide
Immunogen Description	Synthesized peptide derived from internal of human K0100.
Target Name	K0100
Other Names	Breast cancer overexpressed gene 1 protein; Antigen MLAA-22;
Accession No.	Swiss-Prot: Q14667NCBI Gene ID: 9703
SDS-PAGE MW	254kd
Concentration	1.0mg/ml
Formulation	Rabbit IgG in phosphate buffered saline (without Mg ²⁺ and Ca ²⁺), pH 7.4, 150mM NaCl, 0.02% sodium azide and 50% glycerol.
Storage	Store at -20°C

Application Details

Immunohistochemistry: 1:50~1:100

Immunofluorescence: 1:100~1:500

Images



Immunohistochemistry analysis of paraffin-embedded human breast carcinoma tissue, using K0100 antibody #33883.

Immunofluorescence analysis of MCF-7 cells, using K0100 antibody #33883.



Background

Belongs to the UPF0378 family. 4 isoforms of the human protein are produced by alternative splicing.?

Song J., Biochim. Biophys. Acta 1760:62-69(2006).

Nagase T., DNA Res. 2:37-43(1995).

Chen G., Leuk. Res. 29:503-509(2005).

Note: This product is for in vitro research use only and is not intended for use in humans or animals.