

KSR2 Antibody

Catalog No: #33940



Package Size: #33940-1 50ul #33940-2 100ul

Orders: order@signalwayantibody.comSupport: tech@signalwayantibody.com

Description

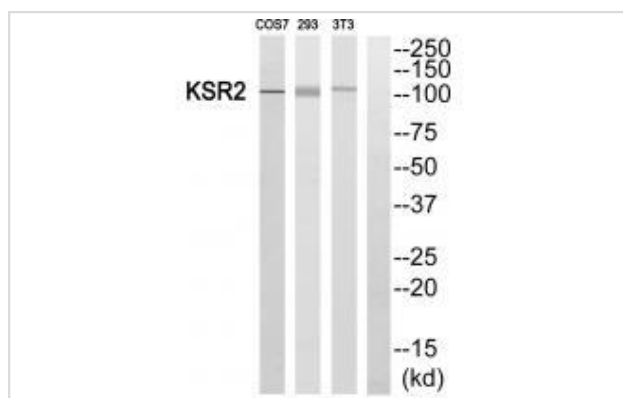
Product Name	KSR2 Antibody
Host Species	Rabbit
Clonality	Polyclonal
Purification	The antibody was affinity-purified from rabbit antiserum by affinity-chromatography using epitope-specific immunogen.
Applications	WB IF
Species Reactivity	Hu Ms
Specificity	The antibody detects endogenous levels of total KSR2 protein.
Immunogen Type	Peptide
Immunogen Description	Synthesized peptide derived from internal of human KSR2.
Target Name	KSR2
Other Names	hKSR2; Kinase suppressor of Ras 2; KSR2;
Accession No.	Swiss-Prot: Q6VAB6NCBI Gene ID: 283455
SDS-PAGE MW	108kd
Concentration	1.0mg/ml
Formulation	Rabbit IgG in phosphate buffered saline (without Mg ²⁺ and Ca ²⁺), pH 7.4, 150mM NaCl, 0.02% sodium azide and 50% glycerol.
Storage	Store at -20°C

Application Details

Western blotting: 1:500~1:3000

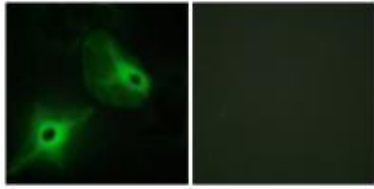
Immunofluorescence: 1:100~1:500

Images



Western blot analysis of extracts from COS7, 293 and 3T3 cells, using KSR2 antibody #33940.

Immunofluorescence analysis of HeLa cells, using KSR2 antibody #33940.



Background

Location-regulated scaffold connecting MEK to RAF. Has very low protein kinase activity and can phosphorylate MAP2K1 at several Ser and Thr residues with very low efficiency (in vitro). Interaction with BRAF enhances KSR2-mediated phosphorylation of MAP2K1 (in vitro). Blocks MAP3K8 kinase activity and MAP3K8-mediated signaling. Acts as a negative regulator of MAP3K3-mediated activation of ERK, JNK and NF-kappa-B pathways, inhibiting MAP3K3-mediated interleukin-8 production.

Ota T., Nat. Genet. 36:40-45(2004).

Scherer S.E., Nature 440:346-351(2006).

Channavajhala P.L., J. Biol. Chem. 278:47089-47097(2003).

Note: This product is for in vitro research use only and is not intended for use in humans or animals.