

## KPBB Antibody

Catalog No: #34016

Package Size: #34016-1 50ul #34016-2 100ul

Orders: [order@signalwayantibody.com](mailto:order@signalwayantibody.com)Support: [tech@signalwayantibody.com](mailto:tech@signalwayantibody.com)

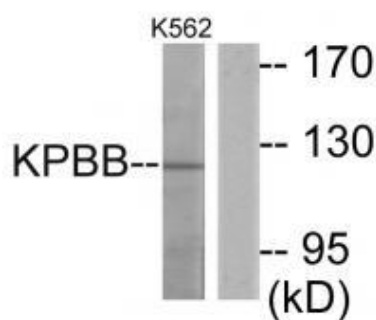
## Description

Product Name	KPBB Antibody
Host Species	Rabbit
Clonality	Polyclonal
Purification	The antibody was affinity-purified from rabbit antiserum by affinity-chromatography using epitope-specific immunogen.
Applications	WB
Species Reactivity	Hu
Specificity	The antibody detects endogenous levels of total KPBB protein.
Immunogen Type	Peptide
Immunogen Description	Synthesized peptide derived from internal of human KPBB.
Target Name	KPBB
Other Names	Phosphorylase b kinase regulatory subunit beta; Phosphorylase kinase subunit beta; PHKB;
Accession No.	Swiss-Prot: Q93100NCBI Gene ID: 5257
SDS-PAGE MW	124kd
Concentration	1.0mg/ml
Formulation	Rabbit IgG in phosphate buffered saline (without Mg <sup>2+</sup> and Ca <sup>2+</sup> ), pH 7.4, 150mM NaCl, 0.02% sodium azide and 50% glycerol.
Storage	Store at -20°C

## Application Details

Western blotting: 1:500~1:3000

## Images



Western blot analysis of extracts from K562 cells, using KPBB antibody #34016.

## Background

Phosphorylase b kinase catalyzes the phosphorylation of serine in certain substrates, including troponin I. The beta chain acts as a regulatory unit and

modulates the activity of the holoenzyme in response to phosphorylation.

Wuellrich-Schmoll A., Eur. J. Biochem. 238:374-380(1996).

van den Berg I.E.T., Am. J. Hum. Genet. 61:539-546(1997).

---

Note: This product is for in vitro research use only and is not intended for use in humans or animals.