

JIP3 Antibody

Catalog No: #34121

Package Size: #34121-1 50ul #34121-2 100ul

Orders: order@signalwayantibody.comSupport: tech@signalwayantibody.com

Description

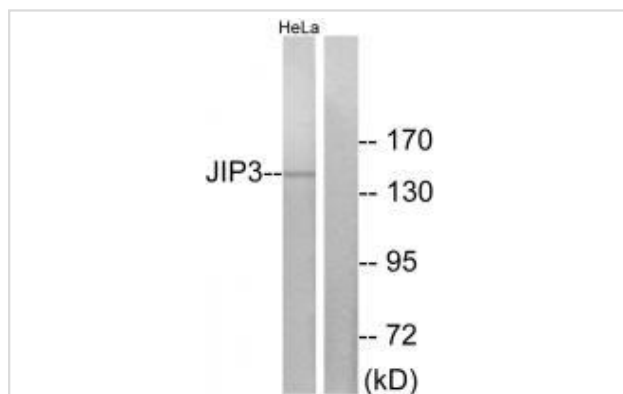
Product Name	JIP3 Antibody
Host Species	Rabbit
Clonality	Polyclonal
Purification	The antibody was affinity-purified from rabbit antiserum by affinity-chromatography using epitope-specific immunogen.
Applications	WB IF
Species Reactivity	Hu
Specificity	The antibody detects endogenous levels of total JIP3 protein.
Immunogen Type	Peptide
Immunogen Description	Synthesized peptide derived from internal of human JIP3.
Target Name	JIP3
Other Names	C-jun-amino-terminal kinase interacting protein 3; JIP-3; JIP3; JNK MAP kinase scaffold protein 3; JNK-interacting protein 3
Accession No.	Swiss-Prot: Q9UPT6NCBI Gene ID: 23162
SDS-PAGE MW	147kd
Concentration	1.0mg/ml
Formulation	Rabbit IgG in phosphate buffered saline (without Mg ²⁺ and Ca ²⁺), pH 7.4, 150mM NaCl, 0.02% sodium azide and 50% glycerol.
Storage	Store at -20°C

Application Details

Western blotting: 1:500~1:3000

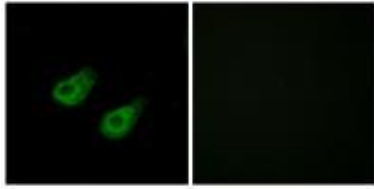
Immunofluorescence: 1:100~1:500

Images



Western blot analysis of extracts from HeLa cells, using JIP3 antibody #34121.

Immunofluorescence analysis of HeLa cells, using JIP3 antibody #34121.



Background

The JNK-interacting protein (JIP) group of scaffold proteins selectively mediates JNK signaling by aggregating specific components of the MAPK cascade to form a functional JNK signaling module. May function as a regulator of vesicle transport, through interactions with the JNK-signaling components and motor proteins By similarity. UniProtKB Q9ESN9

Hattori A., DNA Res. 7:357-366(2000).

Martin J., Nature 432:988-994(2004).

Beausoleil S.A., Proc. Natl. Acad. Sci. U.S.A. 101:12130-12135(2004).

Note: This product is for in vitro research use only and is not intended for use in humans or animals.