

## IGFBP-3 Antibody

Catalog No: #21671

Package Size: #21671-1 50ul #21671-2 100ul

Orders: [order@signalwayantibody.com](mailto:order@signalwayantibody.com)Support: [tech@signalwayantibody.com](mailto:tech@signalwayantibody.com)

## Description

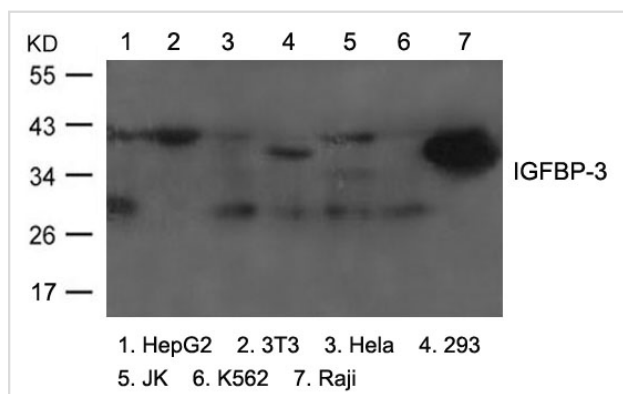
Product Name	IGFBP-3 Antibody
Host Species	Rabbit
Clonality	Polyclonal
Purification	Antibodies were produced by immunizing rabbits with synthetic peptide and KLH conjugates. Antibodies were purified by affinity-chromatography using epitope-specific peptide.
Applications	WB
Species Reactivity	Hu
Specificity	The antibody detects endogenous level of total IGFBP-3 protein.
Immunogen Type	Peptide-KLH
Immunogen Description	Peptide sequence around aa.185~189(R-Y-K-V-D) derived from Human IGFBP-3.
Target Name	IGFBP-3
Other Names	IBP3; BP-53;
Accession No.	Swiss-Prot: P17936NCBI Protein: NP_001013416.1
Concentration	1.0mg/ml
Formulation	Supplied at 1.0mg/mL in phosphate buffered saline (without Mg <sup>2+</sup> and Ca <sup>2+</sup> ), pH 7.4, 150mM NaCl, 0.02% sodium azide and 50% glycerol.
Storage	Store at -20°C for long term preservation (recommended). Store at 4°C for short term use.

## Application Details

Predicted MW: 24-41kd

Western blotting: 1:500~1:1000

## Images



Western blot analysis of extracts from various cells using IGFBP-3 Antibody #21671.

## Background

IGF-binding proteins prolong the half-life of the IGFs and have been shown to either inhibit or stimulate the growth promoting effects of the IGFs on

cell culture. They alter the interaction of IGFs with their cell surface receptors.

Roghani M., Segovia B., Whitechurch O., Binoux M. Growth Regul. 1:125-130(1991)

Ikonen M., Liu B., Hashimoto Y., Ma L. Cohen P. Proc. Natl. Acad. Sci. U.S.A. 100:13042-13047(2003)

Zhou W., Ross M.M., Tessitore A. J. Proteome Res. 8:5523-5531(2009)

---

Note: This product is for in vitro research use only and is not intended for use in humans or animals.