

STAT3(Phospho-Ser727) Antibody

Catalog No: #11046



Package Size: #11046-1 50ul #11046-2 100ul

Orders: order@signalwayantibody.com

Support: tech@signalwayantibody.com

Description

| | |
|-----------------------|-----------------------------------------------------------------------------------------------------------------------------------------------------------------------------------------------------------------------------------------------------------------------------------------|
| Product Name | STAT3(Phospho-Ser727) Antibody |
| Host Species | Rabbit |
| Clonality | Polyclonal |
| Purification | Antibodies were produced by immunizing rabbits with synthetic phosphopeptide and KLH conjugates. Antibodies were purified by affinity-chromatography using epitope-specific phosphopeptide. Non-phospho specific antibodies were removed by chromatography using non-phosphopeptide. |
| Applications | WB IHC IF |
| Species Reactivity | Hu Ms Rt |
| Specificity | The antibody detects endogenous level of STAT3 only when phosphorylated at serine 727. |
| Immunogen Type | Peptide-KLH |
| Immunogen Description | Peptide sequence around phosphorylation site of serine 727 (P-M-S(p)-P-R) derived from Human STAT3. |
| Target Name | STAT3 |
| Modification | Phospho |
| Other Names | APRF, HIES |
| Accession No. | Swiss-Prot: P40763NCBI Protein: NP_003141.2 |
| Concentration | 1.0mg/ml |
| Formulation | Supplied at 1.0mg/mL in phosphate buffered saline (without Mg ²⁺ and Ca ²⁺), pH 7.4, 150mM NaCl, 0.02% sodium azide and 50% glycerol. |
| Storage | Store at -20°C for long term preservation (recommended). Store at 4°C for short term use. |

Application Details

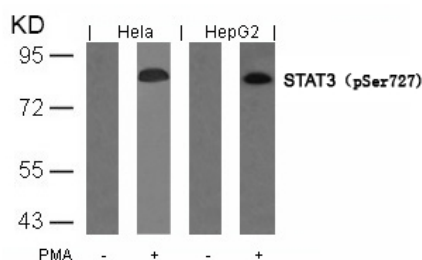
Predicted MW: 88kd

Western blotting: 1:500~1:1000

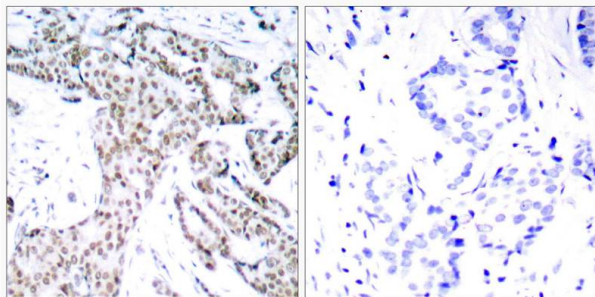
Immunohistochemistry: 1:50~1:100

Immunofluorescence: 1:100~1:200

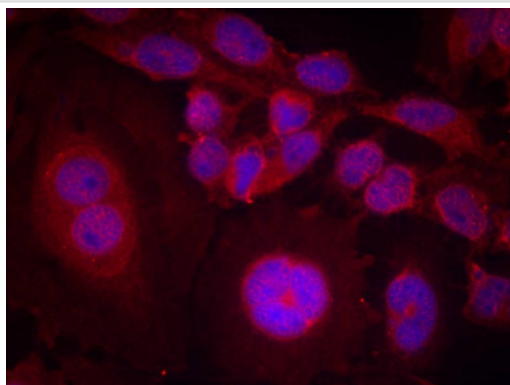
Images



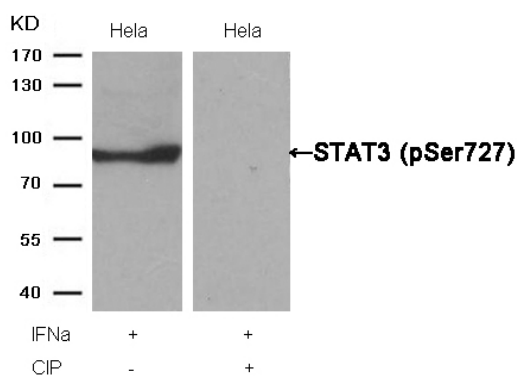
Western blot analysis of extracts from HeLa and HepG2 cells untreated or treated with PMA using STAT3(Phospho-Ser727) Antibody #11046.



Immunohistochemical analysis of paraffin-embedded human breast carcinoma tissue using STAT3(Phospho-Ser727) Antibody #11046(left) or the same antibody preincubated with blocking peptide(right).



Immunofluorescence staining of methanol-fixed HeLa cells using STAT3(Phospho-Ser727) Antibody #11046.



Western blot analysis of extracts from HeLa cells, treated with IFNα or calf intestinal phosphatase (CIP), using STAT3 (Phospho-Ser727) Antibody #11046.

Background

Transcription factor that binds to the interleukin-6 (IL-6)-responsive elements identified in the promoters of various acute-phase protein genes.

Activated by IL31 through IL31RA.

Heim M H, (1999) J Recept Signal Transduct Res. 19: 75-120.

Takeda K, et al. (1997) Proc Natl Acad Sci USA. 94: 3801-3804.

Catlett-Falcone R, et al. (1999) Immunity. 10: 105-115.

Garcia R, et al. (1998) J Biomed Sci. 5: 79-85.

Bromberg J F, et al. (1999) Cell. 98: 295-303.

Published Papers

el at., Anti inflammatory and metabolic reprogramming effects of MENK produce antitumor response in CT26 tumor bearing mice. In J Leukoc Biol on 2020 Jan 29. by Tuo Y, Zhang Z, et al..PMID:31994797, , (2020)

[PMID:31994797](#)

el at., A thiazole-derived oridonin analogue exhibits antitumor activity by directly and allosterically inhibiting STAT3. In J Biol Chem on 2019 Nov 15;by Shen X, Zhao L, et al..PMID:31594861, , (2019)

[PMID:31594861](#)

el at., Migration Suppression of Small Cell Lung Cancer by Polysaccharides from *Nostoc commune* Vaucher. In *J Agric Food Chem* on 2016 Aug 17 by Min Guo, Guo-Bin Ding, et al..PMID: 27465400, , (2016)

[PMID:27465400](#)

el at., Prognostic significance of serine-phosphorylated STAT3 expression in pT1-T2 oral tongue carcinoma. In *Clin Exp Otorhinolaryngol* On 2015 Sep by Elena Fasanaro, Claudia Staffieri et al..PMID:26330924, , (2015)

[PMID:26330924](#)

el at., Pwp1 Is Required for the Differentiation Potential of Mouse Embryonic Stem Cells Through Regulating Stat3 Signaling. In *Stem Cells* on 2015 Mar by Junwei Shen, Wenwen Jia, et al..PMID:25335925, , (2015)

[PMID:25335925](#)

el at., Blocking the bFGF/STAT3 interaction through specific signaling pathways induces apoptosis in glioblastoma cells. In *J Neurooncol* 2014 Oct by Jingchao Wu, Xuequan Feng et al..PMID: 25048528, , (2014)

[PMID:25048528](#)

el at., Protein Kinase CK2 Inhibition Down Modulates the NF- κ B and STAT3 Survival Pathways, Enhances the Cellular Proteotoxic Stress and Synergistically Boosts the Cytotoxic Effect of Bortezomib on Multiple Myeloma and Mantle Cell Lymphoma Cells. In *PLoS One* on 2013 Sep 27 by Sabrina Manni, Alessandra Brancalion, et al..PMID:24086494, , (2013)

[PMID:24086494](#)

ANIRBAN MAJUMDER, SASWATI BANERJEE, JOSHUA A. HARRILL el at., Neurotrophic Effects of Leukemia Inhibitory Factor on Neural Cells Derived from Human Embryonic Stem Cells., *STEM CELLS*, 30:2387–2399(2012)

[PMID:22899336](#)

el at., Neurotrophic effects of leukemia inhibitory factor on neural cells derived from human embryonic stem cells. In *Stem Cells* on 2012 Nov by Anirban Majumder, Saswati Banerjee, et al..PMID: 22899336, , (2012)

[PMID:22899336](#)

el at., Induction of interleukin-10 is dependent on p38 mitogen-activated protein kinase pathway in macrophages infected with porcine reproductive and respiratory syndrome virus. In *Virol J* on 2012 Aug 21 by Jun Hou, Lianghai Wang, et al..PMID: 22909062, , (2012)

[PMID:22909062](#)

Heng-Chao Yu, Hong-Yan Qin, Fei He el at., Canonical Notch Pathway Protects Hepatocytes from Ischemia/Reperfusion Injury in Mice by Repressing Reactive Oxygen Species Production Through JAK2/STAT3 Signaling., *HEPATOLOGY*, 54(3):979-988(2011)

[PMID:21633967](#)

el at., Resistance to bleomycin-induced lung fibrosis in MMP-8 deficient mice is mediated by interleukin-10. In *PLoS One* on 2010 Oct 7 by Emilio Garcí a-Prieto, Adrián González-López, et al..PMID: 20949050, , (2010)

[PMID:20949050](#)

el at., Significance and relationship between Cripto-1 and p-STAT3 expression in gastric cancer and precancerous lesions. In *World J Gastroenterol* on 2010 Feb 7 by Jian-Guo Zhang, Jing Zhao, et al..PMID: 20128024, , (2010)

[PMID:20128024](#)

Note: This product is for in vitro research use only and is not intended for use in humans or animals.