

# a-Tubulin Antibody

Catalog No: #21581



Package Size: #21581-1 50ul #21581-2 100ul

Orders: [order@signalwayantibody.com](mailto:order@signalwayantibody.com)Support: [tech@signalwayantibody.com](mailto:tech@signalwayantibody.com)

## Description

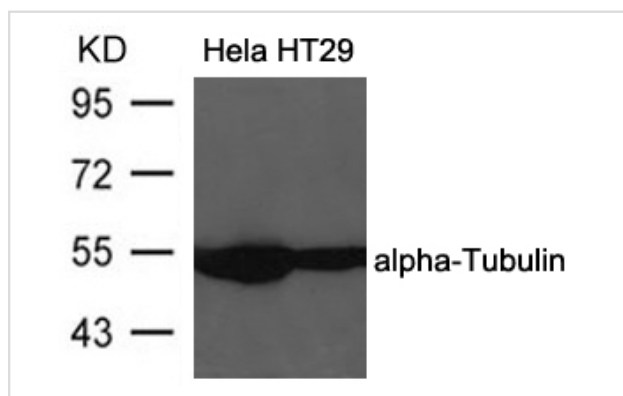
Product Name	a-Tubulin Antibody
Host Species	Rabbit
Clonality	Polyclonal
Purification	Antibodies were produced by immunizing rabbits with synthetic peptide and KLH conjugates. Antibodies were purified by affinity-chromatography using epitope-specific peptide.
Applications	WB
Species Reactivity	Hu Ms Rt
Specificity	The antibody detects endogenous level of total alpha-Tubulin protein.
Immunogen Type	Peptide-KLH
Immunogen Description	Peptide sequence around aa.437-441(V-D-S-V-E) derived from Human alpha-Tubulin.
Target Name	a-Tubulin
Other Names	K-ALPHA-1
Accession No.	Swiss-Prot: P68363NCBI Protein: NP_006073.2
Concentration	1.0mg/ml
Formulation	Supplied at 1.0mg/mL in phosphate buffered saline (without Mg <sup>2+</sup> and Ca <sup>2+</sup> ), pH 7.4, 150mM NaCl, 0.02% sodium azide and 50% glycerol.
Storage	Store at -20°C for long term preservation (recommended). Store at 4°C for short term use.

## Application Details

Predicted MW: 52kd

Western blotting: 1:500~1:1000

## Images



Western blot analysis of extracts from HeLa and HT29 cells using alpha-Tubulin Antibody #21581.

## Background

Tubulin is the major constituent of microtubules. It binds two moles of GTP, one at an exchangeable site on the beta chain and one at a

non-exchangeable site on the  $\alpha$ -chain.

Cowan N.J., Dobner P., Fuchs E.V., Cleveland D.W. Mol. Cell. Biol. 3:1738-1745(1983)

## Published Papers

et al., Cystic Fibrosis Transmembrane Conductance Regulator (CFTR) Prevents Apoptosis Induced by Hydrogen Peroxide in Basilar Artery Smooth Muscle Cells .In Apoptosis On 2014 Sep by Jia-Wei Zeng , Xue-Lin Zeng et al..PMID:24999019, , (2014)

[PMID:24999019](#)

Note: This product is for in vitro research use only and is not intended for use in humans or animals.