

GFP Antibody

Catalog No: #35538



Package Size: #35538-1 50ul #35538-2 100ul

Orders: order@signalwayantibody.com
Support: tech@signalwayantibody.com

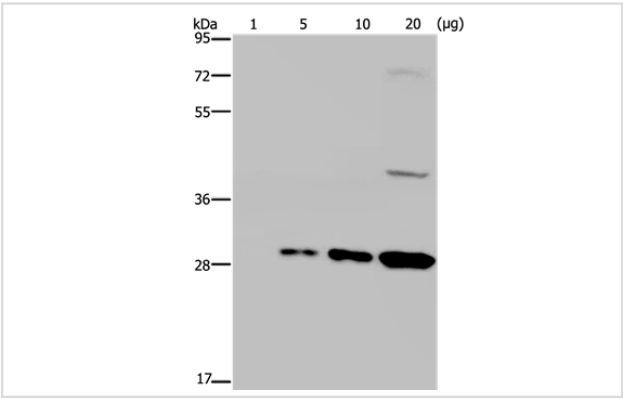
Description

Product Name	GFP Antibody
Host Species	Rabbit
Clonality	Polyclonal
Purification	Antigen affinity purification.
Applications	WB
Specificity	The antibody detects transfected proteins containing GFP tag.
Immunogen Type	Recombinant Protein
Immunogen Description	Full length fusion protein
Target Name	GFP
Other Names	GFP-like chromoprotein
Accession No.	Gene Accssion: P42212
SDS-PAGE MW	27kd
Concentration	3.2mg/ml
Formulation	Rabbit IgG in pH7.3 PBS, 0.05% NaN3, 50% Glycerol.
Storage	Store at -20°C

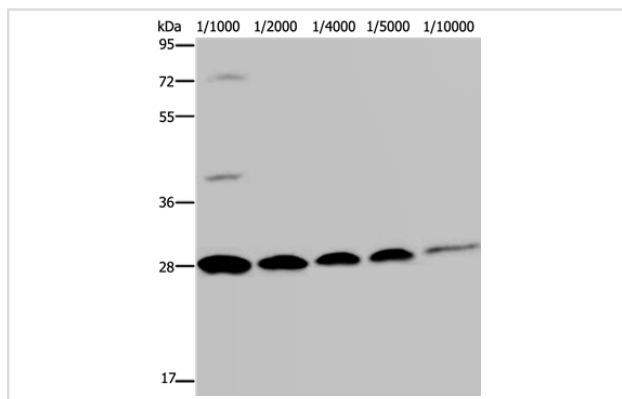
Application Details

Western blotting: 1:1000-1:10000

Images



Gel: 8%SDS-PAGE
Lysate: 20ug GFP transfected 293T cell
Primary antibody: 1/800 dilution
Secondary antibody dilution: 1/8000
Exposure time: 30 seconds



Gel: 8%SDS-PAGE

Lysates: 20ug GFP transfected 293T cell per lane

Primary antibody: at various dilution

Secondary antibody dilution: 1/8000

Exposure time: 30 seconds

Background

Green fluorescence protein (GFP) is a 27 kDa protein derived from the jellyfish *Aequorea victoria*, which emits green light (emission peak at a wavelength of 509 nm) when excited by blue light (excitation peak at a wavelength of 395 nm). Green Fluorescent Protein (GFP) has become an invaluable tool in cell biology research, since its intrinsic fluorescence can be visualized in living cells.

Note: This product is for in vitro research use only and is not intended for use in humans or animals.