

KRT18 Antibody

Catalog No: #35624

Package Size: #35624-1 50ul #35624-2 100ul

Orders: order@signalwayantibody.comSupport: tech@signalwayantibody.com

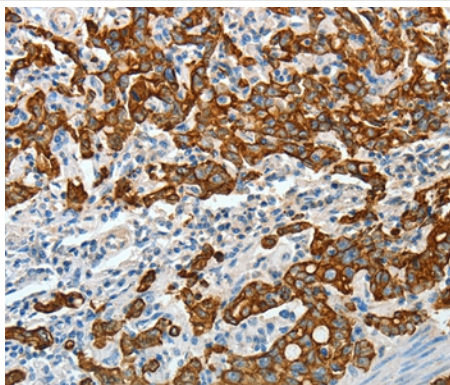
Description

Product Name	KRT18 Antibody
Host Species	Rabbit
Clonality	Polyclonal
Purification	Antigen affinity purification.
Applications	IHC
Species Reactivity	Hu
Specificity	The antibody detects endogenous levels of total KRT18 protein.
Immunogen Type	Recombinant Protein
Immunogen Description	Fusion protein corresponding to a region derived from internal residues of human keratin 18
Target Name	KRT18
Other Names	K18; CYK18
Accession No.	Swiss-Prot#: P05783NCBI Gene ID: 3875Gene Accssion: BC000180
Concentration	2mg/ml
Formulation	Rabbit IgG in pH7.3 PBS, 0.05% NaN ₃ , 50% Glycerol.
Storage	Store at -20°C

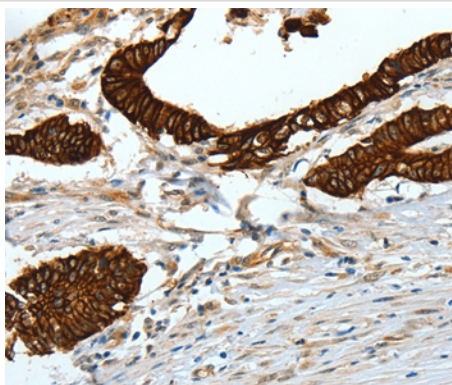
Application Details

Immunohistochemistry: 1:50-1:200

Images



Immunohistochemical analysis of paraffin-embedded Human gastric cancer tissue using #35624 at dilution 1/50.



Immunohistochemical analysis of paraffin-embedded Human colon cancer tissue using #35624 at dilution 1/50.

Background

KRT18 encodes the type I intermediate filament chain keratin 18. Keratin 18, together with its filament partner keratin 8, are perhaps the most commonly found members of the intermediate filament gene family. They are expressed in single layer epithelial tissues of the body. Mutations in this gene have been linked to cryptogenic cirrhosis. Two transcript variants encoding the same protein have been found for this gene.

Published Papers

el at., Systematic analysis of mRNA expression profiles in NSCLC cell lines to screen metastasis-related genes. In Mol Med Rep. On 2016 Dec by Liu Y, Liu L et al.. PMID:27840927, , (2016)

[PMID:27840927](#)

Note: This product is for in vitro research use only and is not intended for use in humans or animals.