

## AMOTL2 Antibody

Catalog No: #36101

Package Size: #36101-1 50ul #36101-2 100ul

Orders: [order@signalwayantibody.com](mailto:order@signalwayantibody.com)Support: [tech@signalwayantibody.com](mailto:tech@signalwayantibody.com)

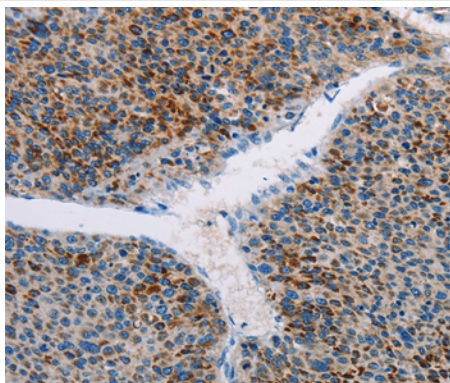
## Description

Product Name	AMOTL2 Antibody
Host Species	Rabbit
Clonality	Polyclonal
Purification	Antigen affinity purification.
Applications	IHC
Species Reactivity	Hu
Specificity	The antibody detects endogenous levels of total AMOTL2 protein.
Immunogen Type	Recombinant Protein
Immunogen Description	Fusion protein corresponding to residues near the C terminal of human angiomin like 2
Target Name	AMOTL2
Other Names	LCCP
Accession No.	Swiss-Prot#: Q9Y2J4NCBI Gene ID: 51421Gene Accssion: BC011454
Concentration	0.7mg/ml
Formulation	Rabbit IgG in pH7.3 PBS, 0.05% NaN <sub>3</sub> , 50% Glycerol.
Storage	Store at -20°C

## Application Details

Immunohistochemistry: 1:25-1:100

## Images



Immunohistochemical analysis of paraffin-embedded Human liver cancer tissue using #36101 at dilution 1/20.

## Background

Angiomin is a protein that binds angiostatin, a circulating inhibitor of the formation of new blood vessels (angiogenesis). Angiomin mediates angiostatin inhibition of endothelial cell migration and tube formation in vitro. The protein encoded by this gene is related to angiomin and is a member of the motins protein family.

## Published Papers

et al., AMOTL2 knockdown promotes the proliferation, migration and invasion of glioma by regulating EMT and Akt nuclear localization. In Oncol Rep on 2021 Jul by Xingjie Chen, Yalin Lu, et al.. PMID:34036399, (2021)

[PMID:34036399](#)

Note: This product is for in vitro research use only and is not intended for use in humans or animals.