

DNASE1L3 Antibody

Catalog No: #36420



Package Size: #36420-1 50ul #36420-2 100ul

Orders: order@signalwayantibody.comSupport: tech@signalwayantibody.com

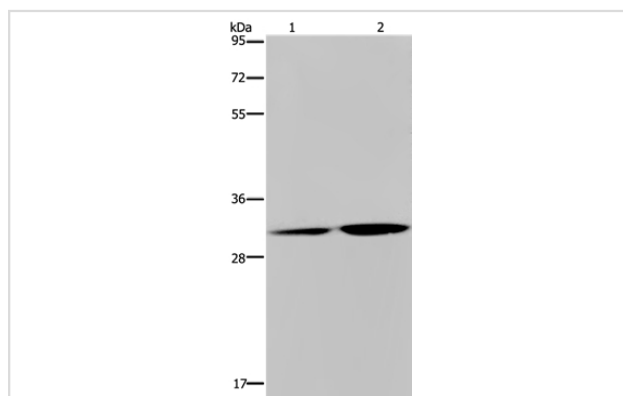
Description

Product Name	DNASE1L3 Antibody
Host Species	Rabbit
Clonality	Polyclonal
Purification	Antigen affinity purification.
Applications	WB
Species Reactivity	Hu
Specificity	The antibody detects endogenous levels of total DNASE1L3 protein.
Immunogen Type	Recombinant Protein
Immunogen Description	Fusion protein corresponding to a region derived from internal residues of human deoxyribonuclease I-like 3
Target Name	DNASE1L3
Other Names	LSD; DHP2; SLEB16; DNAS1L3
Accession No.	Swiss-Prot#: Q13609NCBI Gene ID: 1776Gene Accssion: BC015831
SDS-PAGE MW	36kd
Concentration	0.9mg/ml
Formulation	Rabbit IgG in pH7.3 PBS, 0.05% NaN ₃ , 50% Glycerol.
Storage	Store at -20°C

Application Details

Western blotting: 1:500-1:2000

Images



Gel: 8%SDS-PAGE

Lysates (from left to right): HT-29 cell and human placenta tissue

Amount of lysate: 40ug per lane

Primary antibody: 1/450 dilution

Secondary antibody dilution: 1/8000

Exposure time: 30 seconds

Background

This gene encodes a member of the deoxyribonuclease I family. The encoded protein hydrolyzes DNA, is not inhibited by actin, and mediates the breakdown of DNA during apoptosis. Mutations in this gene are a cause of systemic lupus erythematosus-16. Alternatively spliced transcript variants encoding multiple isoforms have been observed for this gene.?

Published Papers

et al., Deficient DNASE1L3 facilitates neutrophil extracellular traps-induced invasion via cyclic GMP-AMP synthase and the non-canonical NF- κ B pathway in diabetic hepatocellular carcinoma In Clin Transl Immunology on 2022 Apr 20 by Na Li, Xue Zheng, et al..PMID: 35474906, , (2022)
[PMID:35474906](#)

Note: This product is for in vitro research use only and is not intended for use in humans or animals.