

## SCGB2A1 Antibody

Catalog No: #36684



Package Size: #36684-1 50ul #36684-2 100ul

Orders: [order@signalwayantibody.com](mailto:order@signalwayantibody.com)Support: [tech@signalwayantibody.com](mailto:tech@signalwayantibody.com)

## Description

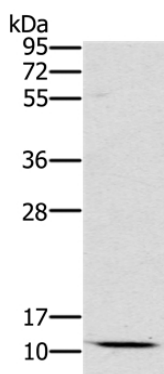
Product Name	SCGB2A1 Antibody
Host Species	Rabbit
Clonality	Polyclonal
Purification	Antigen affinity purification.
Applications	WB IHC
Species Reactivity	Hu
Specificity	The antibody detects endogenous levels of total SCGB2A1 protein.
Immunogen Type	Recombinant Protein
Immunogen Description	Fusion protein corresponding to a region derived from internal residues of human secretoglobin, family 2A, member 1
Target Name	SCGB2A1
Other Names	LPHC; LPNC; MGB2; UGB3
Accession No.	Swiss-Prot#: O75556NCBI Gene ID: 4246Gene Accssion: BC062218/O75556
SDS-PAGE MW	11kd
Concentration	1.2mg/ml
Formulation	Rabbit IgG in pH7.3 PBS, 0.05% NaN <sub>3</sub> , 50% Glycerol.
Storage	Store at -20°C

## Application Details

Western blotting: 1:200-1:1000

Immunohistochemistry: 1:100-1:300

## Images



Gel: 10%SDS-PAGE

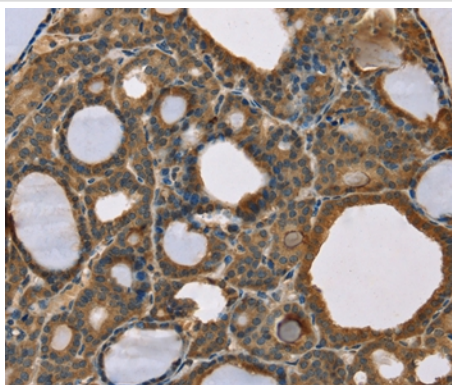
Lysates (from left to right): Mouse kidney tissue

Amount of lysate: 40ug per lane

Primary antibody: 1/800 dilution

Secondary antibody dilution: 1/8000

Exposure time: 10 minutes



Immunohistochemical analysis of paraffin-embedded Human thyroid cancer tissue using #36684 at dilution 1/50.

## Background

Mammaglobin-B also known as secretoglobin family 2A member 1 is a protein that in humans is encoded by the SCGB2A1 gene. SCGB2A1 expression is highly specific of mammary tissue, and has been used for identification and detection of disseminated breast cancer cells. May bind androgens and other steroids, may also bind estramustine, a chemotherapeutic agent used for prostate cancer. May be under transcriptional regulation of steroid hormones.

Note: This product is for in vitro research use only and is not intended for use in humans or animals.