

ADRB3 Antibody

Catalog No: #36731



Package Size: #36731-1 50ul #36731-2 100ul

Orders: order@signalwayantibody.comSupport: tech@signalwayantibody.com

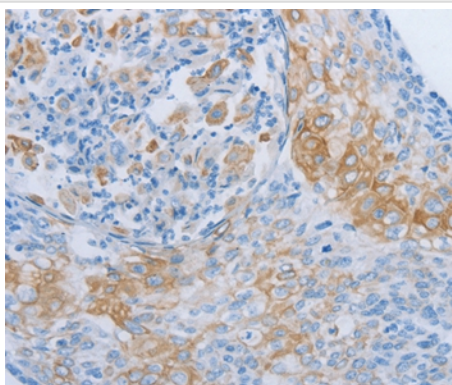
Description

Product Name	ADRB3 Antibody
Host Species	Rabbit
Clonality	Polyclonal
Purification	Antigen affinity purification.
Applications	IHC
Species Reactivity	Hu
Specificity	The antibody detects endogenous levels of total ADRB3 protein.
Immunogen Type	Peptide
Immunogen Description	Synthetic peptide corresponding to a region derived from internal residues of human Adrenoceptor beta 3
Target Name	ADRB3
Other Names	BETA3AR
Accession No.	Swiss-Prot#: P13945NCBI Gene ID: 155Gene Accssion: NP_000016
Concentration	2.4mg/ml
Formulation	Rabbit IgG in pH7.3 PBS, 0.05% NaN ₃ , 50% Glycerol.
Storage	Store at -20°C

Application Details

Immunohistochemistry: 1:50-1:100

Images



Immunohistochemical analysis of paraffin-embedded Human cervical cancer tissue using #36731 at dilution 1/60.

Background

The protein encoded by this gene belongs to the family of beta adrenergic receptors, which mediate catecholamine-induced activation of adenylate cyclase through the action of G proteins. This receptor is located mainly in the adipose tissue and is involved in the regulation of lipolysis and thermogenesis.

Published Papers

el at., Hepatokine ERAP1 impairs skeletal muscle insulin sensitivity via ADRB2/PKA pathway. , , (2020)

PMID:

Note: This product is for in vitro research use only and is not intended for use in humans or animals.