

## PKM2(phospho-Ser37) Antibody

Catalog No: #11456



Package Size: #11456-1 50ul #11456-2 100ul

Orders: [order@signalwayantibody.com](mailto:order@signalwayantibody.com)Support: [tech@signalwayantibody.com](mailto:tech@signalwayantibody.com)

## Description

Product Name	PKM2(phospho-Ser37) Antibody
Host Species	Rabbit
Clonality	Polyclonal
Isotype	IgG
Purification	Antibodies were produced by immunizing rabbits with synthetic phosphopeptide and KLH conjugates. Antibodies were purified by affinity-chromatography using epitope-specific phosphopeptide. Non-phospho specific antibodies were removed by chromatography using non-phosphopeptide.
Applications	WB IF
Species Reactivity	Human
Specificity	The antibody detects endogenous level of PKM2 only when phosphorylated at serine 37.
Immunogen Type	Peptide-KLH
Immunogen Description	Peptide sequence around phosphorylation site of serine 37(I-D-S(p)-P-P) derived from Human PKM2.
Conjugates	Unconjugated
Target Name	PKM2
Modification	Phospho
Other Names	PKM, PK3, OIP3, PK2
Accession No.	Swiss-Prot#: P14618 NCBI Protein#: NP_872270.1
SDS-PAGE MW	60kd
Concentration	1.0mg/ml
Formulation	Supplied at 1.0mg/mL in phosphate buffered saline (without Mg <sup>2+</sup> and Ca <sup>2+</sup> ), pH 7.4, 150mM NaCl, 0.02% sodium azide and 50% glycerol.
Storage	Store at -20°C

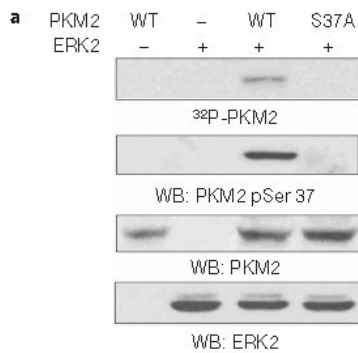
## Application Details

Predicted MW: 60kd

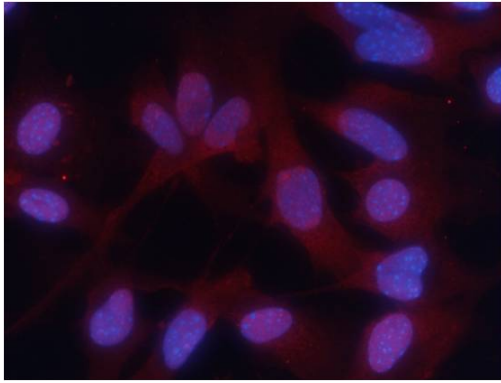
Western Blot: 1:500~1:1000

Immunofluorescence: 1:100~1:200

## Images



Western blot analysis of in vitro kinase assays carried out with purified active ERK2, wild-type (WT) PKM2 and PKM2 S37A mutant using PKM2(phospho-Ser37)Antibody #11456.



Immunofluorescence staining of methanol-fixed MEF cells using PKM2 (phospho-Ser37) Antibody #11456.

## Background

Glycolytic enzyme that catalyzes the transfer of a phosphoryl group from phosphoenolpyruvate (PEP) to ADP, generating ATP. Stimulates POU5F1-mediated transcriptional activation. Plays a general role in caspase independent cell death of tumor cells. The ratio between the highly active tetrameric form and nearly inactive dimeric form determines whether glucose carbons are channeled to biosynthetic processes or used for glycolytic ATP production. The transition between the 2 forms contributes to the control of glycolysis and is important for tumor cell proliferation and survival.

Weiwei Yang<sup>1</sup>, Yanhua Zheng<sup>1</sup>, Yan Xia<sup>1</sup>, Haitao Ji, &quot;ERK1/2-dependent phosphorylation and nuclear translocation of PKM2 promotes the Warburg effect.&quot; Nature Cell Biology(2012)|doi:10.1038/ncb2629

Received 16 August 2012 Accepted 24 October 2012 Published online 25 November 2012

## Published Papers

et al., Nuclear translocation of PKM2/AMPK complex sustains cancer stem cell populations under glucose restriction stress. In Cancer Lett. On 2018 May 1 et al..PMID:29408265 , , (2018)

[PMID:29408265](#)

et al., Estrogen activates pyruvate kinase M2 and increases the growth of TSC2-deficient cells. In PLoS One on 2020 Feb 20; by Lu Y, Liu X, et al..PMID: 32078667, , (2020)

[PMID:32078667](#)

et al., ERK1/2-dependent phosphorylation and nuclear translocation of PKM2 promotes the Warburg effect. In Nat Cell Biol on 2012 Dec by Weiwei Yang, Yanhua Zheng, et al..PMID:23178880, , (2012)

[PMID:23178880](#)

et al., Cross-Talk Between Alternatively Spliced UGT1A Isoforms and Colon Cancer Cell Metabolism. In Mol Pharmacol on 2017 Mar by Yannick Audet-Delage, Michèle Rouleau, et al..PMID: 28049773, , (2017)

[PMID:28049773](#)

et al., Glut1 Promotes Cell Proliferation, Migration and Invasion by Regulating Epidermal Growth Factor Receptor and Integrin Signaling in Triple-Negative Breast Cancer Cells. In BMB Rep on 2017 Mar by Sunhwa Oh, Hyungjoo Kim, et al..PMID: 27931517, , (2017)

[PMID:27931517](#)

el at., Selective GPR55 Antagonism Reduces Chemoresistance in Cancer Cells .In *Pharmacol Res* on 2016 Sep by Nagendra S Singh , Michel Bernier et al..PMID: 27423937 , (2016)

[PMID:27423937](#)

el at., ECM1 promotes the Warburg effect through EGF-mediated activation of PKM2.In *Cell Signal* on 2015 Feb by Kyung-Min Lee, Keesoo Nam et al ..PMID: 25446258 , (2015)

[PMID:25446258](#)

el at., Vitamin C uncouples the Warburg metabolic switch in KRAS mutant colon cancer.In *Oncotarget* on 2016 Jul 26 by Oscar Aguilera , Maria Muñoz-Sagastibelza et al..PMID:27323830 , (2016)

[PMID:27323830](#)

el at., Estradiol-17 $\beta$  Upregulates Pyruvate Kinase M2 Expression to Coactivate Estrogen Receptor- $\delta$  and to Integrate Metabolic Reprogramming With the Mitogenic Response in Endometrial Cells .In *J Clin Endocrinol Metab* on 2014 Oct by Salama A Salama, Mahmoud A Mohammad et al..PMID:24471565, , (2014)

[PMID:24471565](#)

el at., PKM2 dephosphorylation by Cdc25A promotes the Warburg effect and tumorigenesis.In *Nat Commun* on 2016 Aug 3 by Ji Liang , Ruixiu Cao et al..PMID: 27485204 , (2016)

[PMID:27485204](#)

el at., Exploring rapamycin-induced pro-survival pathways in Tuberous Sclerosis Complex and the development of alternative therapies, , (2020)

[PMID:](#)

el at., Non-Canonical Role of PDK1 as a Negative Regulator of Apoptosis through Macromolecular Complexes Assembly at the ER Mitochondria Interface in Oncogene-Driven NSCLC.

In *Cancers (Basel)* on 2021 Aug 17 by Viviana De Rosa, Francesca Iommelli,et al..PMID:34439291 , (2021)

[PMID:34439291](#)

el at., Warburg-like metabolic transformation underlies neuronal degeneration in sporadic Alzheimer's disease.In *Cell Metab.* 2022 Sep 6 by Larissa Traxler 1, Joseph R Herdy,et al..PMID: 35987203 , (2022)

[PMID:35987203](#)

el at., LncCCAT1 interaction protein PKM2 upregulates SREBP2 phosphorylation to promote osteosarcoma tumorigenesis by enhancing the Warburg effect and lipogenesis. In *Int J Oncol* on 2022 Apr by Feifei Pu, Jianxiang Liu,et al..PMID:35244192 , (2022)

[PMID:35244192](#)

el at., Oncogenic TRIB2 interacts with and regulates PKM2 to promote aerobic glycolysis and lung cancer cell procession. In *Cell Death Discov* on 2022 Jul 5 by Yuan-Rong Liu, Dan-Dan Song, et al..PMID:35790734 , (2022)

[PMID:35790734](#)

el at., TRIM35-mediated degradation of nuclear PKM2 destabilizes GATA4/6 and induces P53 in cardiomyocytes to promote heart failure. In *Sci Transl Med*

on 2022 Nov 2 by Maria Areli Lorenzana-Carrillo, Keshav Gopal,et al..PMID: 36322626 , (2022)

[PMID:36322626](#)

el at., Phosphoproteome of signaling by ErbB2 in ovarian cancer cells. In *Biochim Biophys Acta Proteins Proteom* on 2022 Apr 1 by C Sidhanth, S Bindhya,et al..PMID:35158093 , (2022)

[PMID:35158093](#)

el at., ATM inhibition blocks glucose metabolism and amplifies the sensitivity of resistant lung cancer cell lines to oncogene driver inhibitors In *Cancer Metab* on 2023 Nov 6 by Cristina Terlizzi , Viviana De Rosa et al..PMID:37932830 , (2023)

[PMID:37932830](#)

el at., Intersection of immune and oncometabolic pathways drives cancer hyperprogression during immunotherapy, , (2023)

PMID:36638784B

Xudong Sha;Jiayuan Lin;Kexin Wu;Jia Lu;Zhihua Yu et al., The TRPV1-PKM2-SREBP1 axis maintains microglial lipid homeostasis in Alzheimer's disease., , (2025)

PMID:39809738

---

Note: This product is for in vitro research use only and is not intended for use in humans or animals.