

## VAMP4 (Phospho-Ser30) Antibody

Catalog No: #12462



Package Size: #12462-1 50ul #12462-2 100ul

Orders: [order@signalwayantibody.com](mailto:order@signalwayantibody.com)Support: [tech@signalwayantibody.com](mailto:tech@signalwayantibody.com)

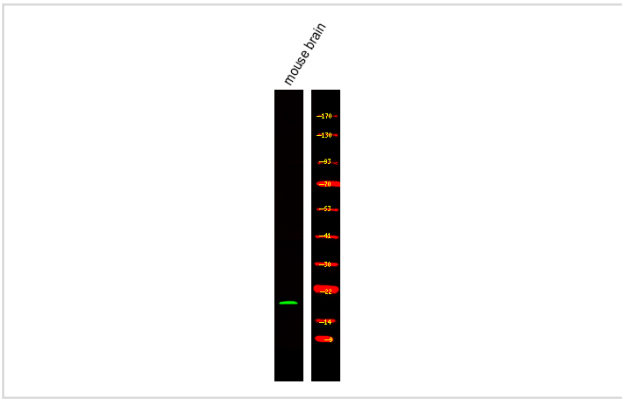
## Description

Product Name	VAMP4 (Phospho-Ser30) Antibody
Host Species	Rabbit
Clonality	Polyclonal
Isotype	IgG
Purification	Antibodies were produced by immunizing rabbits with synthetic phosphopeptide and KLH conjugates. Antibodies were purified by affinity-chromatography using epitope-specific phosphopeptide. Non-phospho specific antibodies were removed by chromatography using non-phosphopeptide.
Applications	WB
Species Reactivity	Human;Mouse;Rat
Specificity	VAMP4 (Phospho-Ser30) Antibody detects endogenous levels of VAMP4 only when phosphorylated at Ser30
Immunogen Type	Peptide
Immunogen Description	A synthesized peptide derived from human VAMP4 (Phospho-Ser30)
Conjugates	Unconjugated
Target Name	VAMP4
Modification	Phospho
Other Names	VAMP4, VAMP-4, VAMP24
Accession No.	Swiss-Prot#: O75379NCBI Gene ID: 8674
Target Species	human
Calculated MW	16kd
Concentration	1.0mg/ml
Formulation	Rabbit IgG in phosphate buffered saline (without Mg <sup>2+</sup> and Ca <sup>2+</sup> ), pH 7.4, 150mM NaCl, 0.02% sodium azide and 50% glycerol.
Storage	Store at -20°C

## Application Details

Western blotting: 1:1000

## Images



Western Blot analysis of lysates of mouse brain, using primary antibody at 1:1000 dilution.

---

Note: This product is for in vitro research use only and is not intended for use in humans or animals.