

## JAK2/3 (Phospho-Tyr966/939) Antibody

Catalog No: #12510



Package Size: #12510-1 50ul #12510-2 100ul

Orders: [order@signalwayantibody.com](mailto:order@signalwayantibody.com)Support: [tech@signalwayantibody.com](mailto:tech@signalwayantibody.com)

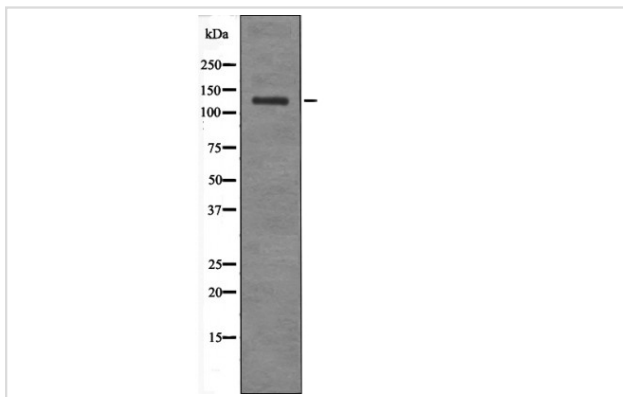
## Description

Product Name	JAK2/3 (Phospho-Tyr966/939) Antibody
Host Species	Rabbit
Clonality	Polyclonal
Isotype	IgG
Purification	Antibodies were produced by immunizing rabbits with synthetic phosphopeptide and KLH conjugates. Antibodies were purified by affinity-chromatography using epitope-specific phosphopeptide. Non-phospho specific antibodies were removed by chromatography using non-phosphopeptide.
Applications	WB
Species Reactivity	Human;Mouse;Rat
Specificity	JAK2/3 (Phospho-Tyr966/939) Antibody detects endogenous levels of JAK2/3 only when phosphorylated at Tyr966/939
Immunogen Type	Peptide
Immunogen Description	A synthesized peptide derived from human JAK2/3 (Phospho-Tyr966/939)
Conjugates	Unconjugated
Target Name	JAK2/3
Modification	Phospho
Other Names	JAK2/3 (Phospho-Tyr966/939) Antibody
Accession No.	Swiss-Prot#: O60674/P52333NCBI Gene ID: 3717
Target Species	human
Calculated MW	130kd
Concentration	1.0mg/ml
Formulation	Rabbit IgG in phosphate buffered saline (without Mg <sup>2+</sup> and Ca <sup>2+</sup> ), pH 7.4, 150mM NaCl, 0.02% sodium azide and 50% glycerol.
Storage	Store at -20°C

## Application Details

Western blotting: 1:1000

## Images



Western blot analysis JAK2/3 (Phospho-Tyr966/939) using EGF treated HepG2 whole cell lysates

---

Note: This product is for in vitro research use only and is not intended for use in humans or animals.