

Phosphoserine Monoclonal Antibody(5B12)

Catalog No: #12828



Package Size: #12828-1 50ul #12828-2 100ul

Orders: order@signalwayantibody.com

Support: tech@signalwayantibody.com

Description

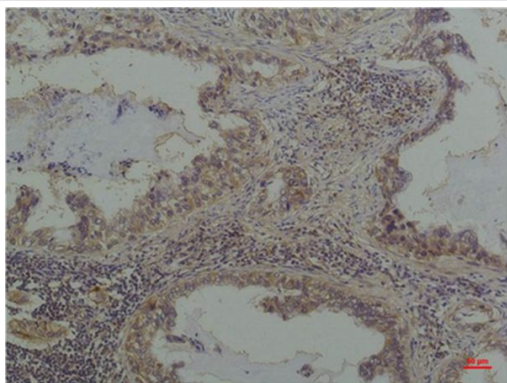
Product Name	Phosphoserine Monoclonal Antibody(5B12)
Host Species	Mouse
Clonality	Monoclonal
Clone No.	5B12
Isotype	IgG1
Applications	WB IHC IF
Specificity	The antibody detects endogenous Phosphoserine protein.
Immunogen Type	Recombinant Protein
Immunogen Description	Recombinant Protein
Conjugates	Unconjugated
Target Name	Phosphoserine
Concentration	1mg/ml
Formulation	Liquid in PBS containing 50% glycerol, 0.5% BSA and 0.02% sodium azide.
Storage	Store at -20°C/1 year

Application Details

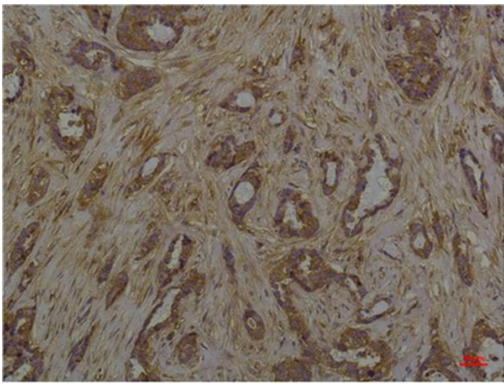
Western blotting: 1:2000-1:5000

Immunohistochemistry: 1:50-1:200

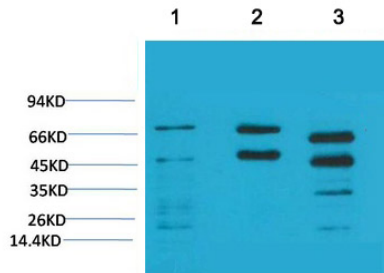
Images



Immunohistochemical analysis of paraffin-embedded Human Lung Carcinoma using Phosphoserine Mouse mAb diluted at 1:200.



Immunohistochemical analysis of paraffin-embedded Human Breast Carcinoma using Phosphoserine Mouse mAb diluted at 1:200.



Western blot analysis of 1) Hela, 2) Rat Brain Tissue, 3) Mouse Brain Tissue with Phosphoserine Mouse mAb diluted at 1:2,000.

Published Papers

et al., lncRNA β • encoded pep β • AP attenuates the pentose phosphate pathway and sensitizes colorectal cancer cells to Oxaliplatin. In EMBO Rep on 2022 Jan 5 by Xinyi Wang, Haiyang Zhang, et al..PMID:34779552, , (2022)

[PMID:34779552](https://pubmed.ncbi.nlm.nih.gov/34779552/)

Note: This product is for in vitro research use only and is not intended for use in humans or animals.