

# phospho-MLKL (S358) Mouse Monoclonal Antibody(6B4)

Catalog No: #12837

Orders: [order@signalwayantibody.com](mailto:order@signalwayantibody.com)Support: [tech@signalwayantibody.com](mailto:tech@signalwayantibody.com)

Package Size: #12837-1 50ul #12837-2 100ul

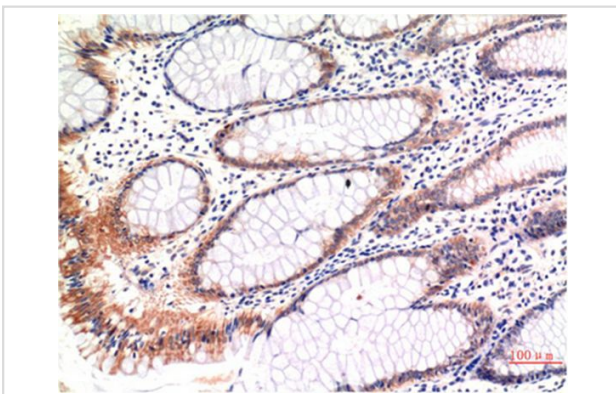
## Description

Product Name	phospho-MLKL (S358) Mouse Monoclonal Antibody(6B4)
Host Species	Mouse
Clonality	Monoclonal
Clone No.	6B4
Isotype	IgG1
Applications	IHC
Species Reactivity	Human
Specificity	phospho-MLKL (S358) Mouse Monoclonal Antibody(6B4) detects endogenous levels of MLKL
Immunogen Type	Peptide
Immunogen Description	Synthetic Peptide
Conjugates	Unconjugated
Target Name	MLKL
Modification	Phospho
Other Names	MLKL
Calculated MW	54kd
Concentration	1mg/ml
Formulation	Liquid in PBS containing 50% glycerol, 0.5% BSA and 0.02% sodium azide.
Storage	Store at -20°C/1 year

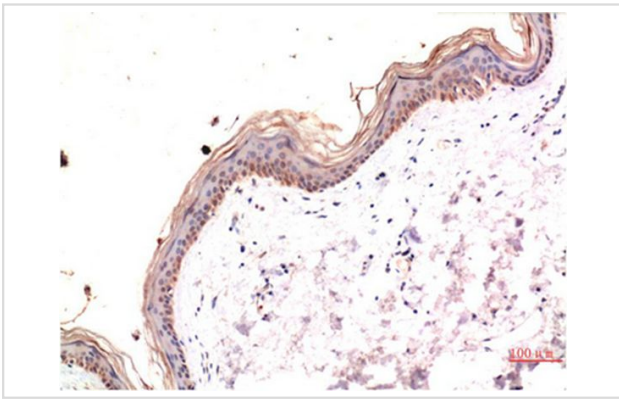
## Application Details

Immunohistochemistry: 1:100-1:200

## Images



Immunohistochemical analysis of paraffin-embedded Human Colon Carcinoma Tissue using Phospho-MLKL S358 Mouse mAb diluted at 1:200.



Immunohistochemical analysis of paraffin-embedded Human Skin Tissue using Phospho-MLKL S358 Mouse mAb diluted at 1:200.

## Published Papers

el at., Necroptosis activation in Alzheimer's disease. In Nat Neurosci on 2017 Sep by Antonella Caccamo, Caterina Branca, et al., , (2017)

[PMID:28758999](#)

el at., Necroptosis activation in Alzheimer's disease. In Nat Neurosci on 2017 Sep by Antonella Caccamo, Caterina Branca, et al.. PMID:28758999, , (2022)

[PMID:28758999](#)

Note: This product is for in vitro research use only and is not intended for use in humans or animals.