

FOXO3a(Phospho-S253) Rabbit mAb

Catalog No: #13372



Package Size: #13372-1 50ul #13372-2 100ul

Orders: order@signalwayantibody.comSupport: tech@signalwayantibody.com

Description

Product Name	FOXO3a(Phospho-S253) Rabbit mAb
Host Species	Recombinant Rabbit
Clonality	Monoclonal
Clone No.	ST49-01
Purification	ProA affinity purified
Applications	WB;ICC/IF;IHC
Species Reactivity	Human;Mouse;Rat
Immunogen Description	Synthetic phospho-peptide corresponding to residues surrounding Ser253 of human FOXO3a.
Conjugates	Unconjugated
Other Names	AF6q21 antibody AF6q21 protein antibody DKFZp781A0677 antibody FKHR2 antibody FKHRL 1 antibody FKHRL1 antibody FKHRL1P2 antibody Forkhead (Drosophila) homolog (rhabdomyosarcoma) like 1 antibody Forkhead box O3 antibody Forkhead box O3A antibody Forkhead box protein O3 antibody Forkhead box protein O3A antibody Forkhead Drosophila homolog of in rhabdomyosarcoma like 1 antibody Forkhead homolog (rhabdomyosarcoma) like 1 antibody Forkhead in rhabdomyosarcoma like 1 antibody Forkhead in rhabdomyosarcoma-like 1 antibody FOX O3A antibody FOXO2 antibody foxo3 antibody FOXO3_HUMAN antibody FOXO3A antibody MGC12739 antibody MGC31925 antibody
Accession No.	Swiss-Prot#:O43524
Calculated MW	71 kDa
SDS-PAGE MW	90 kDa
Formulation	1*TBS (pH7.4), 1%BSA, 40%Glycerol. Preservative: 0.05% Sodium Azide.
Storage	Store at -20°C

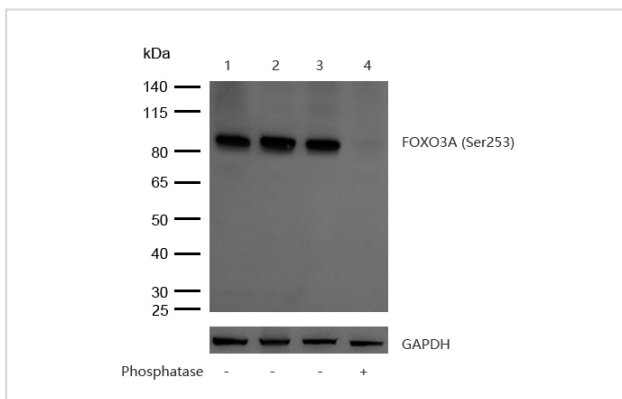
Application Details

WB: 1:500-1:2000

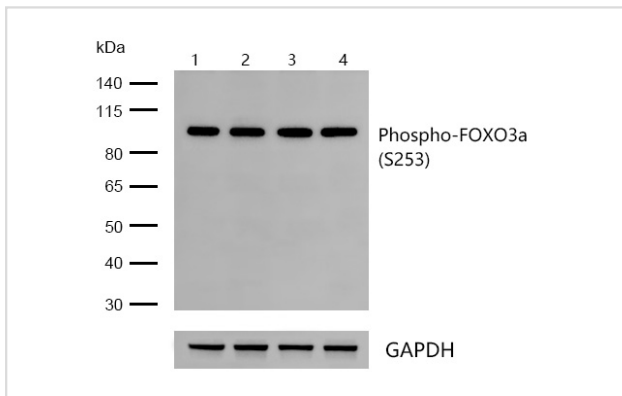
ICC/IF: 1:50-1:200

IHC: 1:50-1:200

Images



All lanes : FOXO3A (Phospho-Ser253) Rabbit mAb at 1/1k dilution
 Lane 1 : K562 whole cell lysates
 Lane 2 : C6 whole cell lysates
 Lane 3 : 3T3 whole cell lysates
 Lane 4 : 3T3 treated with Lambda Protein Phosphatase for 30min whole cell lysates/proteins at 20 µg per lane.
 Secondary All lanes : Goat Anti-Rabbit IgG H&L (HRP) at 1/20000 dilution
 Predicted band size: 71 kDa Observed band size: 90 kDa
 Exposure time: 6 seconds



All lanes : FOXO3a(Phospho-S253) Rabbit mAb at 1/1k dilution

Lane 1 : HeLa whole cell lysates
 Lane 2 : PC12 whole cell lysates
 Lane 3 : MCF7 whole cell lysates
 Lane 4 : Mouse liver lysates

Lysates/proteins at 20 µg per lane.

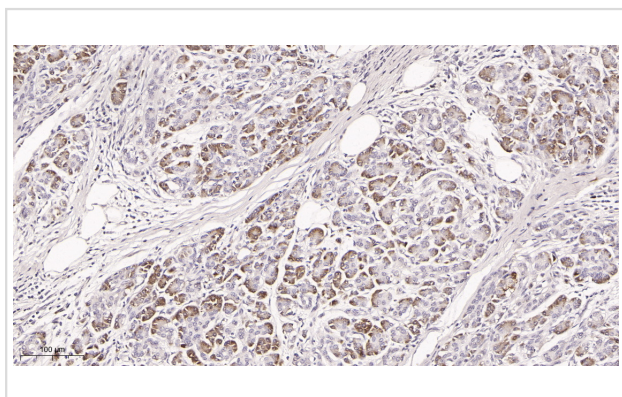
Secondary

All lanes : Goat Anti-Rabbit IgG H&L (HRP) at 1/20000 dilution

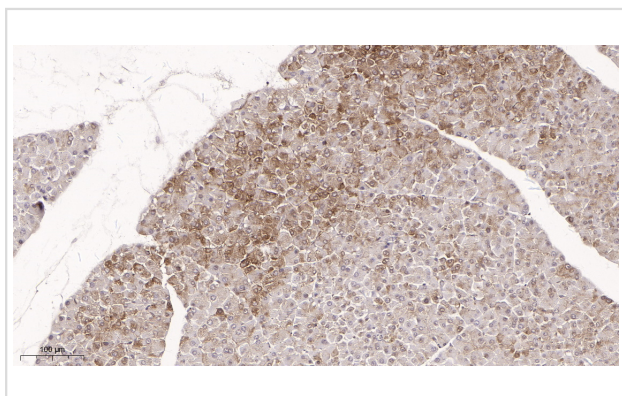
Predicted band size: 71 kDa

Observed band size: 90 kDa

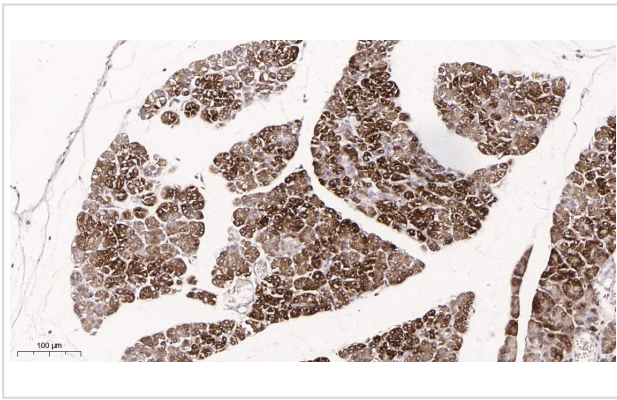
Exposure time: 12 seconds



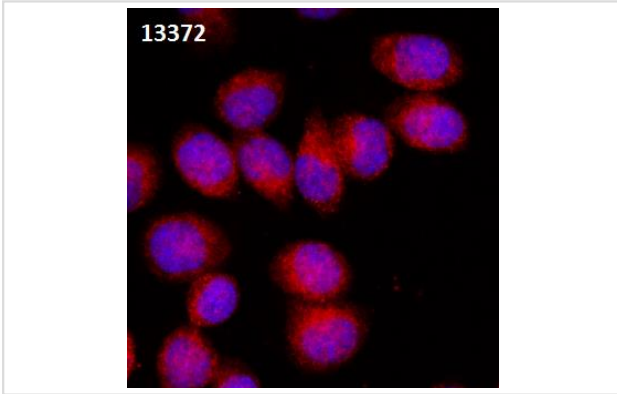
Formalin-fixed;paraffin-embedded human pancreas tissue stained for FOXO3a(Phospho-S253) using 13372 at 1/100 dilution in immunohistochemical analysis.



Formalin-fixed;paraffin-embedded mouse pancreas tissue stained for FOXO3a(Phospho-S253) using 13372 at 1/100 dilution in immunohistochemical analysis.



Formalin-fixed;paraffin-embedded rat pancreas tissue stained for FOXO3a(Phospho-S253) using 13372 at 1/100 dilution in immunohistochemical analysis.



Immunocytochemistry/ Immunofluorescence
 FOXO3a(Phospho-S253) antibody (13372)
 ICC/IF staining of FOXO3a(Phospho-S253) in HeLa cells.
 Cells were fixed with 4% Paraformaldehyde permeabilized with 0.1% Triton X-100.
 Samples were incubated with 13372 at a working dilution of 1/100. The secondary antibody was Alexa FluorB 647 goat anti rabbit;used at a dilution of 1/500.
 Nuclei were counterstained with DAPI.

Background

FKHRL1 (for forkhead in rhabdomyosarcoma) is a member of the FKHR subfamily of forkhead transcription factors. Transcriptional activation of FKHR proteins is regulated by the serine/threonine kinase Akt1, which phosphorylates FKHRL1 at threonine-32 and serine-253. Phosphorylation by Akt1 negatively regulates FKHRL1 by promoting its export from the nucleus. Phosphorylated FKHRL1 associates with 14-3-3 proteins and this complex is retained in the cytoplasm. Growth factor withdrawal stimulates FKHRL1 dephosphorylation and nuclear translocation, leading to FKHR-induced gene-specific transcriptional activation. Within the nucleus, dephosphorylated FKHRL1 triggers apoptosis by inducing the expression of genes that are critical for cell death.

References

1. Guillen-Ahlers H et al. Fas/CD95 Deficiency in Apc Mice Increases Intestinal Tumor Burden. PLoS One 5:e9070 (2010).
2. Mojsilovic-Petrovic J et al. FOXO3a is broadly neuroprotective in vitro and in vivo against insults implicated in motor neuron diseases. J Neurosci 29:8236-47 (2009).

Published Papers

el at., Overexpression of astrocyte-elevated gene-1 is associated with ovarian cancer development and progression. In Mol Med Rep on 2015 Apr by Bo Zhou , Jue Yang et al..PMID:25483832, , (2015)

[PMID:25483832](#)

Zhang Wei-Gang, Ding Jian, Wang Lei, Wu Cheng-Jun, Mao Jia-Yue, Ding Kun, Zhang Cui, Hu Ze-Bo, Li Shu, Wang Lin et al., Tomatidine Ameliorates Diabetes β • Induced Cognitive Impairment and Tau Hyperphosphorylation Through the AMPK β • TFEB Pathway, Journal of neurochemistry, (2025)

[PMID:40387453](#)

Tao Danping, Wu Wenting, Zheng Zerong, Zhang Hui, Ji Yue, Zhuang Yiyi, Wang Huizhen, Peng Fenfen, Chen Xiaowen, Long Haibo, Luo Congwei et al., sIL-11 exacerbates cisplatin-induced acute kidney injury by facilitating apoptosis in renal tubular epithelial cells via ERK1/2-Drp1/TFEB-mediated defective autophagy, Cellular signalling, (2025)

[PMID:41115562](#)

Note: This product is for in vitro research use only and is not intended for use in humans or animals.