

Creb (Phospho-Ser133) Rabbit mAb

Catalog No: #14124



Package Size: #14124-1 50ul #14124-2 100ul

Orders: order@signalwayantibody.com

Support: tech@signalwayantibody.com

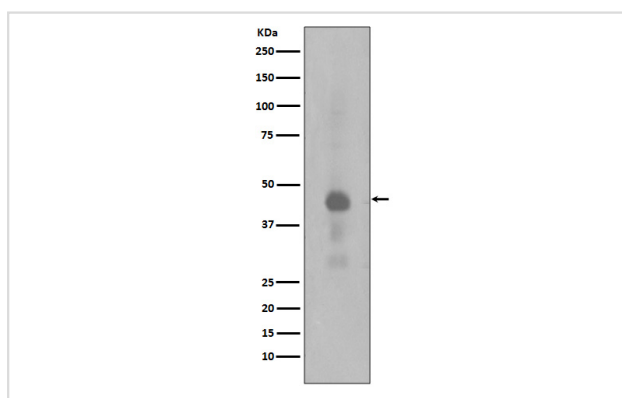
Description

Product Name	Creb (Phospho-Ser133) Rabbit mAb
Host Species	Recombinant Rabbit
Clonality	Monoclonal
Isotype	Rabbit IgG
Purification	Affinity-chromatography
Applications	WB IHC ICC/IF IP FC
Species Reactivity	Human;Mouse;Rat
Specificity	Phospho-Creb (S133) Antibody detects endogenous levels of total Phospho-Creb (S133)
Immunogen Description	A synthesized peptide derived from human Phospho-Creb (S133)
Conjugates	Unconjugated
Other Names	cAMP responsive element binding protein 1; CREB1; CREB-1
Accession No.	Uniprot:P16220
Calculated MW	46kDa
Formulation	Rabbit IgG in phosphate buffered saline , pH 7.4, 150mM NaCl, 0.02% sodium azide and 50% glycerol.
Storage	Store at +4°C short term. Store at -20°C long term. Avoid freeze / thaw cycle.

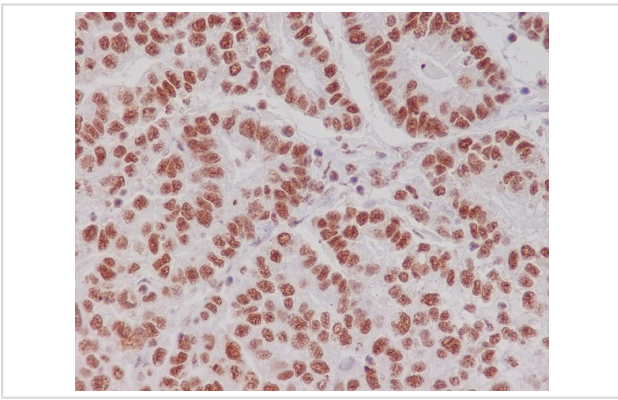
Application Details

WB:1:500~1:2000IHC:1:50~1:200ICC/IF:1:50~1:200IP:1:40FC:1:40

Images



Western blot analysis of Phospho-Creb(Ser133) expression in HeLa cell lysates treated with Calyculin A.



Immunohistochemical analysis of paraffin-embedded human gastric carcinoma, using Phospho-Creb (S133) Antibody.

Product Description

This gene encodes a transcription factor that is a member of the leucine zipper family of DNA binding proteins. This protein binds as a homodimer to the cAMP-responsive element, an octameric palindrome.

Published Papers

Zang Chenchen, Cai Min, Chen Qian, Yu Meng, Yan Jingjing, Guo Yilin, Wang Muqing, Wu Congyu, Gao Yuan, Qi Yun et al., Elephantopus scaber attenuates MC903-caused atopic dermatitis and decreases TNF- α /IFN- γ -induced chemokines by suppressing MKP-1-mediated AP-1 signaling β β β , *Journal of ethnopharmacology*, (2025)

[PMID:40633861](#)

Note: This product is for in vitro research use only and is not intended for use in humans or animals.