

DNA PKcs (Phospho-Ser2056) Rabbit mAb

Catalog No: #14139

Package Size: #14139-1 50ul #14139-2 100ul

Orders: order@signalwayantibody.com

Support: tech@signalwayantibody.com

Description

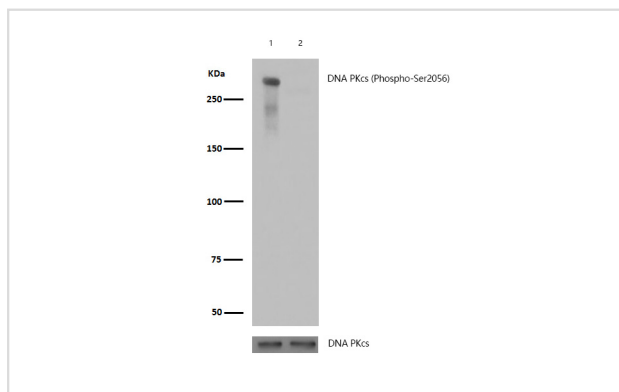
Product Name	DNA PKcs (Phospho-Ser2056) Rabbit mAb
Host Species	Recombinant Rabbit
Clonality	Monoclonal
Isotype	Rabbit IgG
Purification	Affinity-chromatography
Applications	WB IHC
Species Reactivity	Human
Specificity	Phospho-DNA PKcs (S2056) Antibody detects endogenous levels of total Phospho-DNA PKcs (S2056)
Immunogen Description	A synthesized peptide derived from human Phospho-DNA PKcs (S2056)
Conjugates	Unconjugated
Other Names	DNA- PKcs, DNA-dependent protein kinase catalytic subunit, DNPk1, EC 2.7.11.1, P460, PRKD, PRKDC, XRCC7, kinase DNA-PK
Accession No.	Uniprot:P78527
Calculated MW	469 kDa
SDS-PAGE MW	469 kDa
Formulation	Rabbit IgG in phosphate buffered saline , pH 7.4, 150mM NaCl, 0.02% sodium azide and 50% glycerol.
Storage	Store at +4°C short term. Store at -20°C long term. Avoid freeze / thaw cycle.

Application Details

WB:1:500~1:2000

IHC:1:50~1:200

Images



All lanes: DNA PKcs (Phospho-Ser2056) Rabbit mAb at 1/1k dilution

Lane 1 : JK whole cell lysates

Lane 2 : JK treated with alkaline phosphatase whole cell lysates

Lysates/proteins at 20 µg per lane.

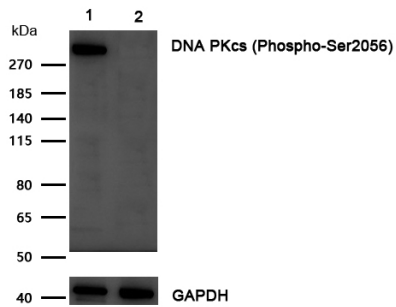
Secondary

All lanes : Goat Anti-Rabbit IgG H&L (HRP) at 1/20000 dilution

Predicted band size: 469 kDa

Observed band size: 469 kDa

Exposure time: 12 seconds

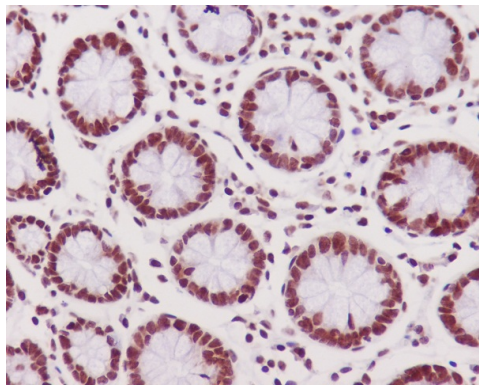


All lanes : DNA PKcs (Phospho-Ser2056) Rabbit mAb at 1/1k dilution

Lane 1 : Wild-type HeLa cell lysate

Lane 2 : DNA PKcs (Phospho-Ser2056) knockdown HeLa cell lysate

Lysates/proteins at 20 µg per lane.



Formalin-fixed, paraffin-embedded human colon tissue stained for DNA PKcs (Phospho-Ser2056) using 14139 at 1/100 dilution in immunohistochemical analysis.

Product Description

The PRKDC gene encodes the catalytic subunit of a nuclear DNA-dependent serine/threonine protein kinase (DNA-PK). The second component is the autoimmune antigen Ku (MIM 152690), which is encoded by the G22P1 gene on chromosome 22q. On its own, the catalytic subunit of DNA-PK is inactive and relies on the G22P1 component to direct it to the DNA and trigger its kinase activity; PRKDC must be bound to DNA to express its catalytic properties.

Note: This product is for in vitro research use only and is not intended for use in humans or animals.