

Glycogen synthase 1 (Phospho-Ser641) Rabbit mAb

Catalog No: #14158



Package Size: #14158-1 50ul #14158-2 100ul

Orders: order@signalwayantibody.com

Support: tech@signalwayantibody.com

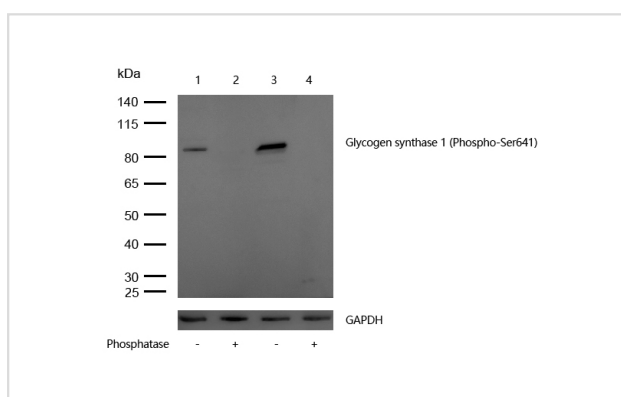
Description

Product Name	Glycogen synthase 1 (Phospho-Ser641) Rabbit mAb
Host Species	Recombinant Rabbit
Clonality	Monoclonal
Isotype	Rabbit IgG
Purification	Affinity-chromatography
Applications	WB IHC ICC/IF
Species Reactivity	Human;Mouse
Specificity	Phospho-Glycogen synthase 1 (S641) Antibody detects endogenous levels of total Phospho-Glycogen synthase 1 (S641)
Immunogen Description	A synthesized peptide derived from human Phospho-Glycogen synthase 1 (S641)
Conjugates	Unconjugated
Other Names	glycogen [starch] synthase, muscle; glycogen synthase, muscle; GYS;
Accession No.	Uniprot:P13807
Calculated MW	84 kDa
SDS-PAGE MW	85 kDa
Formulation	Rabbit IgG in phosphate buffered saline , pH 7.4, 150mM NaCl, 0.02% sodium azide and 50% glycerol.
Storage	Store at +4°C short term. Store at -20°C long term. Avoid freeze / thaw cycle.

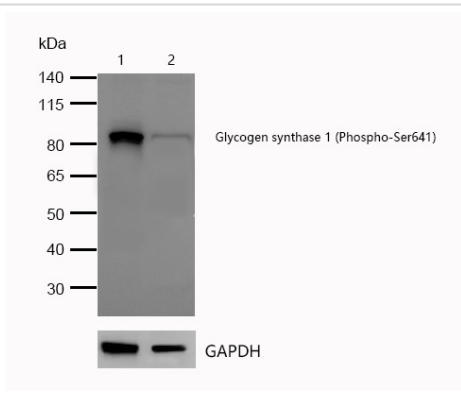
Application Details

WB:1:1000~1:2000IHC:1:50~1:200ICC/IF:1:50~1:200

Images



All lanes : Glycogen synthase 1 (Phospho-Ser641) Rabbit mAb at 1/1k dilution
 Lane 1 : 3T3 whole cell lysates
 Lane 2 : 3T3 treated with Lambda Protein Phosphatase for 30min whole cell
 Lane 3 : HeLa whole cell lysates
 Lane 4 : HeLa treated with Lambda Protein Phosphatase for 30min whole cell
 Lysates/proteins at 20 µg per lane. Secondary All lanes : Goat Anti-Rabbit IgG H&L (HRP) at 1/20000 dilution
 Predicted band size: 84 kDa Observed band size: 85 kDa Exposure time: 5 seconds

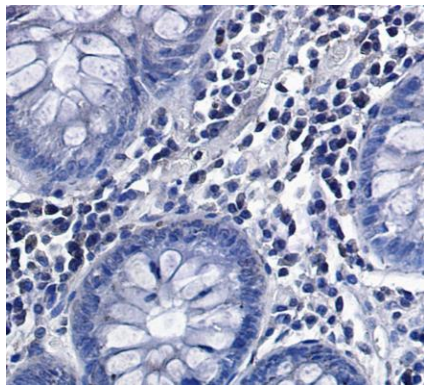


All lanes : Glycogen synthase 1 (Phospho-Ser641) Rabbit mAb at 1/1k dilution

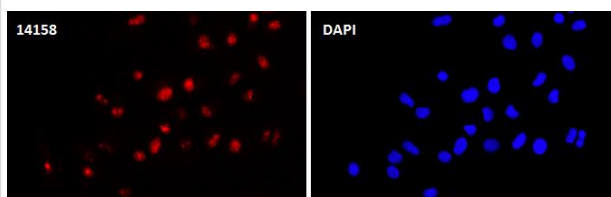
Lane 1 : Wild-type HAP1 cell lysate

Lane 2 : Glycogen synthase 1 (Phospho-Ser641) knockdown HAP1 cell lysate

Lysates/proteins at 20 µg per lane.



Formalin-fixed, paraffin-embedded human colon tissue stained for Glycogen synthase 1 (Phospho-Ser641) using 14158 at 1/100 dilution in immunohistochemical analysis.



Immunocytochemistry/ Immunofluorescence Glycogen synthase 1 (Phospho-Ser641) antibody (14158)

ICC/IF staining of Glycogen synthase 1 (Phospho-Ser641) in A549 cells. Cells were fixed with 4% Paraformaldehyde permeabilized with 0.1% Triton X-100.

Samples were incubated with 14158 at a working dilution of 1/100. The secondary antibody was Alexa FluorB 647 goat anti rabbit, used at a dilution of 1/500.

Nuclei were counterstained with DAPI.

Product Description

Transfers the glycosyl residue from UDP-Glc to the non-reducing end of alpha-1,4-glucan. Allosteric activation by glucose-6-phosphate. Phosphorylation reduces the activity towards UDP-glucose. When in the non-phosphorylated state, glycogen synthase does not require glucose-6-phosphate as an allosteric activator; when phosphorylated it does.

Note: This product is for in vitro research use only and is not intended for use in humans or animals.