

Src (Phospho-Tyr419) Rabbit mAb

Catalog No: #14159



Package Size: #14159-1 50ul #14159-2 100ul

Orders: order@signalwayantibody.com

Support: tech@signalwayantibody.com

Description

Product Name	Src (Phospho-Tyr419) Rabbit mAb
Host Species	Recombinant Rabbit
Clonality	Monoclonal
Isotype	Rabbit IgG
Purification	Affinity-chromatography
Applications	WB
Species Reactivity	Human;Mouse;Rat
Specificity	Phospho-Src (Y419) Antibody detects endogenous levels of total Phospho-Src (Y419)
Immunogen Description	A synthesized peptide derived from human Phospho-Src (Y419)
Conjugates	Unconjugated
Other Names	p60-Src; c-Src; pp60c-src; Avian sarcoma virus; Proto-oncogene c-Src; SRC Oncogene;
Accession No.	Uniprot:P12931
Calculated MW	60 kDa
SDS-PAGE MW	60 kDa
Formulation	Rabbit IgG in phosphate buffered saline , pH 7.4, 150mM NaCl, 0.02% sodium azide and 50% glycerol.
Storage	Store at +4°C short term. Store at -20°C long term. Avoid freeze / thaw cycle.

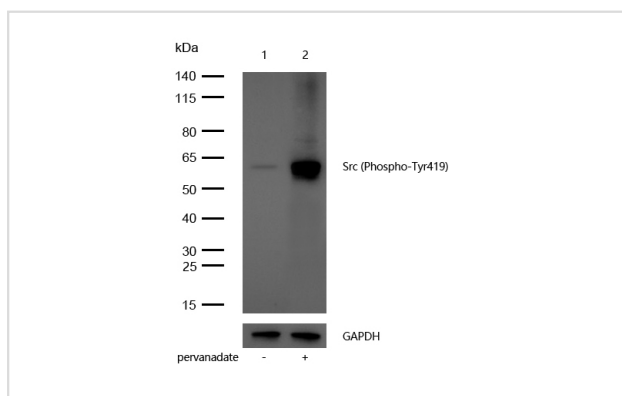
Application Details

WB:1:500~1:2000

FC:

30

Images



All lanes: Src (Phospho-Tyr419) Rabbit mAb at 1/1k dilution

Lane 1 : A431 whole cell lysates

Lane 2 : A431 treated with pervanadate whole cell lysates

Lysates/proteins at 20 µg per lane.

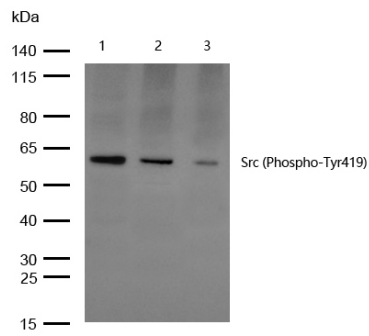
Secondary

All lanes : Goat Anti-Rabbit IgG H&L (HRP) at 1/20000 dilution

Predicted band size: 60 kDa

Observed band size: 60 kDa

Exposure time: 7 seconds



All lanes: Src (Phospho-Tyr419) Rabbit mAb at 1/1k dilution

Lane 1 : Rat bladder lysates

Lane 2 : Mouse bladder lysates Lane 3 : Mouse testis lysates

Lysates/proteins at 20 µg per lane.

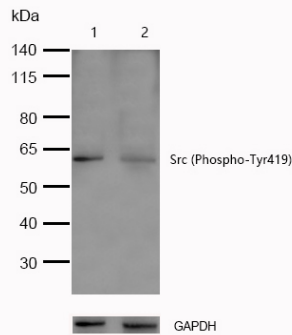
Secondary

All lanes : Goat Anti-Rabbit IgG H&L (HRP) at 1/20000 dilution

Predicted band size: 60 kDa

Observed band size: 60 kDa

Exposure time: 6 seconds



All lanes :Src (Phospho-Tyr419) Rabbit mAb at 1/1k dilution

Lane 1 : Wild-type A549 cell lysate

Lane 2 :Src (Phospho-Tyr419) knockdown A549 cell lysate

Lysates/proteins at 20 µg per lane.

Product Description

Non-receptor protein tyrosine kinase which is activated following engagement of many different classes of cellular receptors including immune response receptors, integrins and other adhesion receptors, receptor protein tyrosine kinases, G protein-coupled receptors as well as cytokine receptors. Participates in signaling pathways that control a diverse spectrum of biological activities including gene transcription, immune response, cell adhesion, cell cycle progression, apoptosis, migration, and transformation.

Note: This product is for in vitro research use only and is not intended for use in humans or animals.