

## RSK1(Phospho-Ser380) Rabbit mAb

Catalog No: #14173



Package Size: #14173-1 50ul #14173-2 100ul

Orders: order@signalwayantibody.com

Support: tech@signalwayantibody.com

## Description

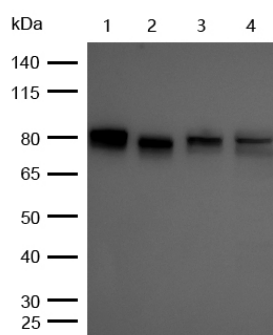
Product Name	RSK1(Phospho-Ser380) Rabbit mAb
Host Species	Recombinant Rabbit
Clonality	Monoclonal
Isotype	Rabbit IgG
Purification	Affinity-chromatography
Applications	WB;IF
Species Reactivity	Human;Mouse;Rat
Specificity	Phospho-RSK1(S380) Antibody detects endogenous levels of total Phospho-RSK1(S380)
Immunogen Description	A synthesized peptide derived from human Phospho-RSK1(S380)
Conjugates	Unconjugated
Other Names	RSK; HU-1; RSK1; MAPKAPK1A; RPS6KA1;
Accession No.	Q15418
Calculated MW	83 kDa
SDS-PAGE MW	83 kDa
Formulation	Rabbit IgG in phosphate buffered saline , pH 7.4, 150mM NaCl, 0.02% sodium azide and 50% glycerol.
Storage	Store at +4°C short term. Store at -20°C long term. Avoid freeze / thaw cycle.

## Application Details

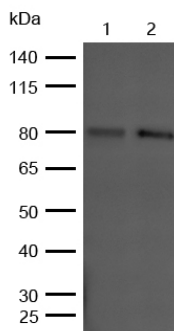
WB:1:500~1:2000

IF:1:50~1:200

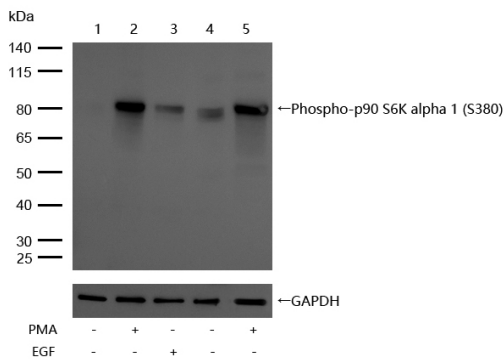
## Images



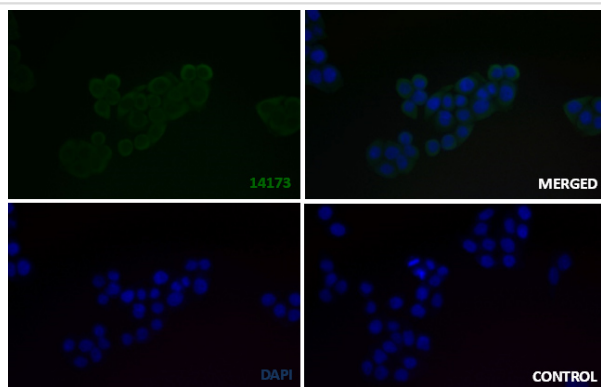
All lanes : Phospho-p90 S6K alpha 1 (S380) Rabbit mAb at 1/1k dilution Lane 1 : A549 whole cell lysates Lane 2 : A431 whole cell lysates Lane 3 : JK whole cell lysates Lane 4 : 3T3 whole cell lysates Lysates/proteins at 20 µg per lane. Secondary All lanes : Goat Anti-Rabbit IgG H&L (HRP) at 1/20000 dilution Predicted band size: 83 kDa Observed band size: 83 kDa Exposure time: 5 seconds



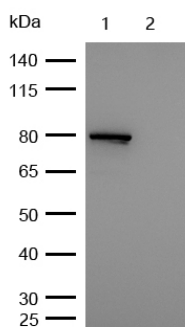
All lanes : Phospho-p90 S6K alpha 1 (S380) Rabbit mAb at 1/1k dilution Lane 1 : Mouse Lung lysates Lane 2 : Rat Skin lysates Lysates/proteins at 20 µg per lane. Secondary All lanes : Goat Anti-Rabbit IgG H&L (HRP) at 1/20000 dilution Predicted band size: 83 kDa Observed band size: 83 kDa Exposure time: 5 seconds



All lanes : Phospho-p90 S6K alpha 1 (S380) Rabbit mAb at 1/1k dilution Lane 1 : HeLa whole cell lysates Lane 2 : HeLa treated with 200nM PMA for 30min whole cell lysates Lane 3 : HeLa treated with 100ng/ml EGF for 20min whole cell lysates Lane 4 : JK whole cell lysates Lane 5 : JK treated with 200nM PMA for 30min whole cell lysates Lysates/proteins at 20 µg per lane. Secondary All lanes : Goat Anti-Rabbit IgG H&L (HRP) at 1/20000 dilution Predicted band size: 83 kDa Observed band size: 83 kDa Exposure time: 6 seconds



Immunocytochemistry/ Immunofluorescence p-p90 S6K alpha 1 (S380) antibody (14173) 14173 staining p-p90 S6K alpha 1 (S380) in the HeLa cell line by ICC/IF. Cells were fixed with 4% Paraformaldehyde permeabilized with 0.1% Triton X-100. Samples were incubated with 14173 at a working dilution of 1/100. The secondary antibody was Alexa FluorB 488 goat anti rabbit, used at a dilution of 1/500. The negative control is shown in bottom right hand panel - for the negative control, purified 14173 was used at a dilution of 1/100 followed by Alexa FluorB 647 goat anti- rabbit antibody at a dilution of 1/500. Nuclei were counterstained with DAPI.



All lanes : Phospho-p90 S6K alpha 1 (S380) Rabbit mAb at 1/1k dilution Lane 1 : Wild-type HeLa cell lysate Lane 2 : Phospho-p90 S6K alpha 1 (S380) knockdown HeLa cell lysate Lysates/proteins at 20 µg per lane.

## Product Description

Rsk1 is a member of a family of 90kDa ribosomal protein S6 kinases, which includes Rsk1, Rsk2 and Rsk3. These are broadly expressed serine / threonine protein kinases activated in response to mitogenic stimuli, including extracellular signal regulated protein kinases Erk1 and Erk2. Rsk1 is activated by MAPK in vitro and in vivo via phosphorylation. Active Rsks appear to play a major role in transcriptional regulation by translocating to the nucleus and phosphorylating c-Fos and CREB.

---

Note: This product is for in vitro research use only and is not intended for use in humans or animals.