

EGFR (Phospho-Y1197) Rabbit mAb

Catalog No: #14180



Package Size: #14180-1 50ul #14180-2 100ul

Orders: order@signalwayantibody.comSupport: tech@signalwayantibody.com

Description

Product Name	EGFR (Phospho-Y1197) Rabbit mAb
Host Species	Recombinant Rabbit
Clonality	Monoclonal
Isotype	Rabbit IgG
Purification	Affinity-chromatography
Applications	WB;IHC;IF
Species Reactivity	Human
Specificity	Phospho-EGFR (Y1197) Antibody detects endogenous levels of Phospho-EGFR (Y1197)
Immunogen Description	A synthesized peptide derived from human Phospho-EGFR (Y1173)
Conjugates	Unconjugated
Other Names	EC 2.7.10.1; ERBB1; Epidermal growth factor receptor precursor; kinase EGFR;
Accession No.	P00533
Calculated MW	134 kDa
SDS-PAGE MW	175 kDa
Formulation	Rabbit IgG in phosphate buffered saline , pH 7.4, 150mM NaCl, 0.02% sodium azide and 50% glycerol.
Storage	Store at +4°C short term. Store at -20°C long term. Avoid freeze / thaw cycle.

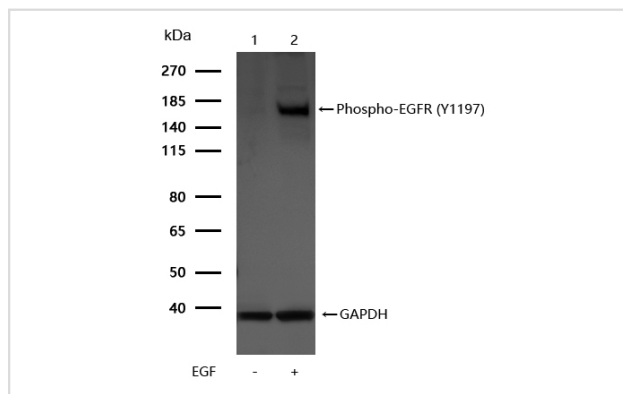
Application Details

WB:1:500~1:2000

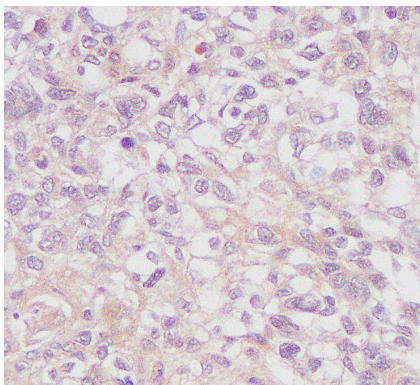
IHC:1:50~1:100

IF:1:50~1:100

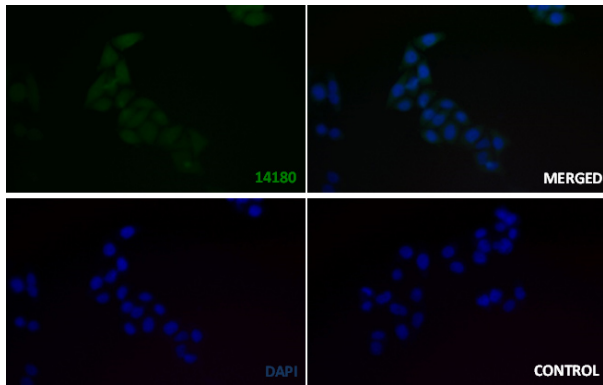
Images



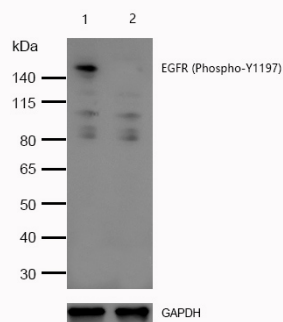
All lanes : Phospho-EGFR (Y1197) Rabbit mAb at 1/1k dilution
 Lane 1 : Hela whole cell lysates
 Lane 2 : Hela treated with 100ng/ml EGF for 20min whole cell lysates
 Lysates/proteins at 20 µg per lane. All lanes : Goat Anti-Rabbit IgG H&L (HRP) at 1/20000 dilution
 Predicted band size: 134 kDa
 Observed band size: 175 kDa
 Exposure time: 4 seconds



Formalin-fixed, paraffin-embedded human lung carcinoma tissue stained for Phospho-EGFR (Y1197) using 14180 at 1/100 dilution in immunohistochemical analysis.



Immunocytochemistry/ Immunofluorescence - p-EGFR (Y1197) antibody (14180) 14180 staining p-EGFR (Y1197) in the HeLa cell line by ICC/IF. Cells were fixed with 4% Paraformaldehyde permeabilized with 0.1% Triton X-100. Samples were incubated with 14180 at a working dilution of 1/100. The secondary antibody was Alexa FluorB 488 goat anti rabbit, used at a dilution of 1/500. The negative control is shown in bottom right hand panel - for the negative control, purified 14180 was used at a dilution of 1/100 followed by Alexa FluorB 647 goat anti- rabbit antibody at a dilution of 1/500. Nuclei were counterstained with DAPI.



All lanes:EGFR (Phospho-Tyr1197) Rabbit mAb at 1/1k dilution Lane 1 : Wild-type HeLa cell lysate Lane 2 : EGFR (Phospho Tyr1197)knockdown HeLa cell lysate Lysates/proteins at 20 µg per lane.

Product Description

The epidermal growth factor (EGF) receptor is a transmembrane tyrosine kinase that belongs to the HER/ErbB protein family. Ligand binding results in receptor dimerization, autophosphorylation, activation of downstream signaling, internalization, and lysosomal degradation. The GRB2 adaptor protein binds activated EGFR at phospho-Tyr1068.

Note: This product is for in vitro research use only and is not intended for use in humans or animals.