

Raf1 (Phospho-Ser621) Rabbit mAb

Catalog No: #14227



Package Size: #14227-1 50ul #14227-2 100ul

Orders: order@signalwayantibody.com

Support: tech@signalwayantibody.com

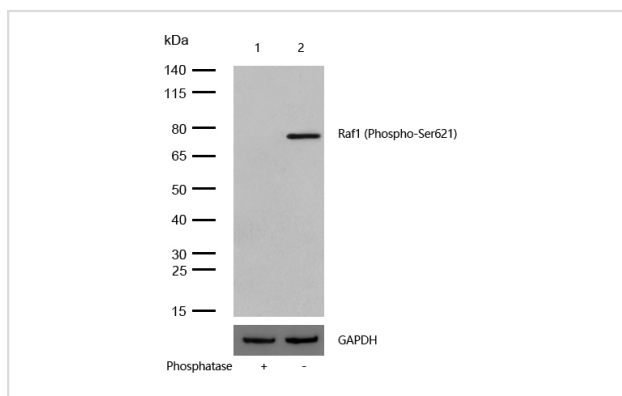
Description

Product Name	Raf1 (Phospho-Ser621) Rabbit mAb
Host Species	Recombinant Rabbit
Clonality	Monoclonal
Isotype	Rabbit IgG
Purification	Affinity-chromatography
Applications	WB
Species Reactivity	Human;Mouse;Rat
Specificity	Phospho-Raf1 (S621) Antibody detects endogenous levels of total Phospho-Raf1 (S621)
Immunogen Description	A synthesized peptide derived from human Phospho-Raf1 (S621)
Conjugates	Unconjugated
Other Names	C-Raf; CRAF; Protein kinase raf 1; RAF1; Raf proto-oncogene serine/threonine-protein kinase; kinase Raf1;
Accession No.	Uniprot:P04049
Calculated MW	73kDa
SDS-PAGE MW	73kDa
Formulation	Rabbit IgG in phosphate buffered saline , pH 7.4, 150mM NaCl, 0.02% sodium azide and 50% glycerol.
Storage	Store at +4°C short term. Store at -20°C long term. Avoid freeze / thaw cycle.

Application Details

WB:1:500~1:2000

Images



All lanes: Raf1 (Phospho-Ser621) Rabbit mAb at 1/1k dilution

Lane 1 : HeLa treated with alkaline phosphatase whole cell lysates

Lane 2 : HeLa whole cell lysates

Lysates/proteins at 20 µg per lane.

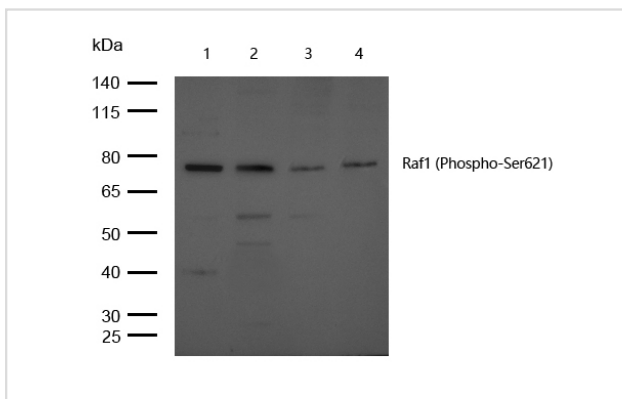
Secondary

All lanes : Goat Anti-Rabbit IgG H&L (HRP) at 1/20000 dilution

Predicted band size: 73 kDa

Observed band size: 73 kDa

Exposure time: 7 seconds



All lanes: Raf1 (Phospho-Ser621) Rabbit mAb at 1/1k dilution

Lane 1 : JK whole cell lysates

Lane 2 : HepG2 whole cell lysates

Lane 3 : Mouse brain lysates

Lane 4 : Rat brain lysates

Lysates/proteins at 20 µg per lane.

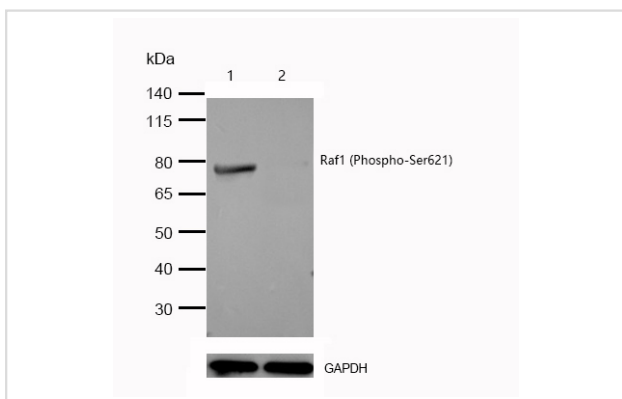
Secondary

All lanes : Goat Anti-Rabbit IgG H&L (HRP) at 1/20000 dilution

Predicted band size: 73 kDa

Observed band size: 73 kDa

Exposure time: 10 seconds



All lanes: Raf1 (Phospho-Ser621) Rabbit mAb at 1/1k dilution

Lane 1 : Wild-type HeLa cell lysate

Lane 2 : Raf1 (Phospho-Ser621) knockdown HeLa cell lysate

Lysates/proteins at 20 µg per lane.

Product Description

Activated ERKs are pleiotropic effectors of cell physiology and play an important role in the control of gene expression involved in the cell division cycle, apoptosis, cell differentiation and cell migration.

Note: This product is for in vitro research use only and is not intended for use in humans or animals.