

GSK3 $\alpha/\beta$ (Phospho-Tyr216/Tyr279) Rabbit mAb

Catalog No: #14236



Package Size: #14236-1 50ul #14236-2 100ul

Orders: order@signalwayantibody.com

Support: tech@signalwayantibody.com

## Description

Product Name	GSK3 $\alpha/\beta$ (Phospho-Tyr216/Tyr279) Rabbit mAb
Host Species	Recombinant Rabbit
Clonality	Monoclonal
Isotype	Rabbit IgG
Purification	Affinity-chromatography
Applications	WB IHC ICC/IF
Species Reactivity	Human;Mouse;Rat
Specificity	Phospho-GSK3 (alpha + beta)(Y216 + Y279) Antibody detects endogenous levels of total Phospho-GSK3 (alpha + beta)(Y216 + Y279)
Immunogen Description	A synthesized peptide derived from human Phospho-GSK3 (alpha + beta)(Y216 + Y279)
Conjugates	Unconjugated
Other Names	Glycogen synthase kinase-3 alpha; GSK-3 alpha; GSK3A
Accession No.	Uniprot:P49840
Calculated MW	51,47kDa
SDS-PAGE MW	51,46kDa
Formulation	Rabbit IgG in phosphate buffered saline , pH 7.4, 150mM NaCl, 0.02% sodium azide and 50% glycerol.
Storage	Store at +4°C short term. Store at -20°C long term. Avoid freeze / thaw cycle.

## Application Details

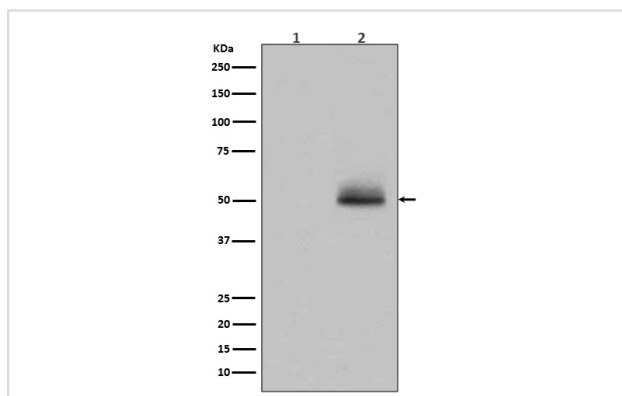
WB:1:500~1:2000

IHC:1:50~1:200

ICC/IF:1:50~1:200

IP:1:50

## Images



Western blot analysis of GSK3 alpha/ beta phosphorylation expression in 293 cell lysate treated with AP.

## Product Description

---

GSK3A a proline-directed protein kinase of the GSK family. Implicated in the control of several regulatory proteins including glycogen synthase, Myb, and c-Jun. GSK3 and GSK3 have similar functions. GSK3 phosphorylates tau, the principal component of neurofibrillary tangles in Alzheimer disease and is required for maximal production of amyloid plaque peptides by secretase.

---

Note: This product is for in vitro research use only and is not intended for use in humans or animals.