

Tau (Phospho-Ser404) Rabbit mAb

Catalog No: #14288

Package Size: #14288-1 50ul #14288-2 100ul

Orders: order@signalwayantibody.com

Support: tech@signalwayantibody.com

Description

Product Name	Tau (Phospho-Ser404) Rabbit mAb
Host Species	Recombinant Rabbit
Clonality	Monoclonal
Isotype	Rabbit IgG
Purification	Affinity-chromatography
Applications	WB;ICC/IF;IHC
Species Reactivity	Human;Mouse;Rat
Specificity	Phospho-Tau (S404) Antibody detects endogenous levels of total Phospho-Tau (S404)
Immunogen Description	A synthesized peptide derived from human Phospho-Tau (S404)
Conjugates	Unconjugated
Other Names	MAPT; Microtubule-associated protein tau; MTBT1; Neurofibrillary tangle protein; Paired helical filament-tau; PHF-tau
Accession No.	Uniprot:P10636
Calculated MW	50-70 kDa
SDS-PAGE MW	55 kDa
Formulation	Rabbit IgG in phosphate buffered saline , pH 7.4, 150mM NaCl, 0.02% sodium azide and 50% glycerol.
Storage	Store at +4°C short term. Store at -20°C long term. Avoid freeze / thaw cycle.

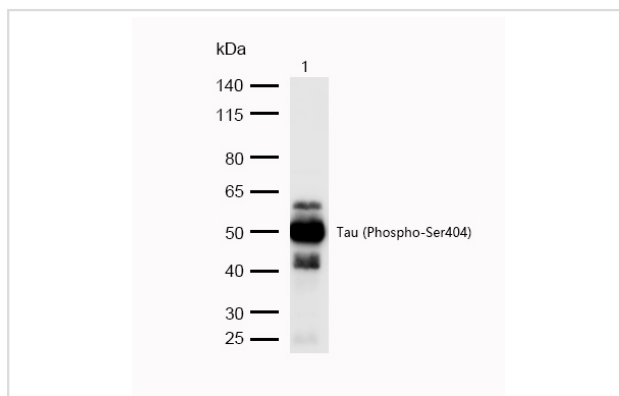
Application Details

WB: 1:500-1:2000

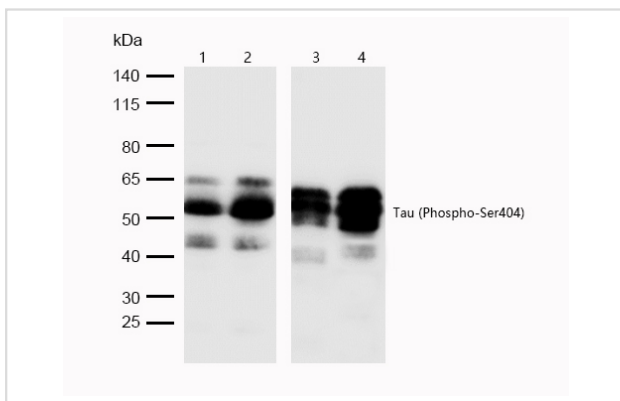
ICC/IF: 1:50-1:200

IHC: 1:50-1:200

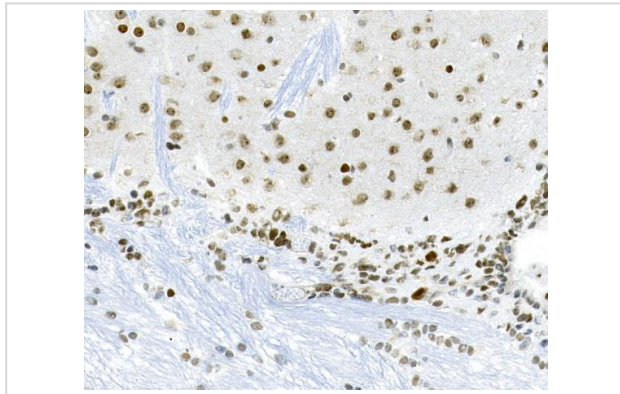
Images



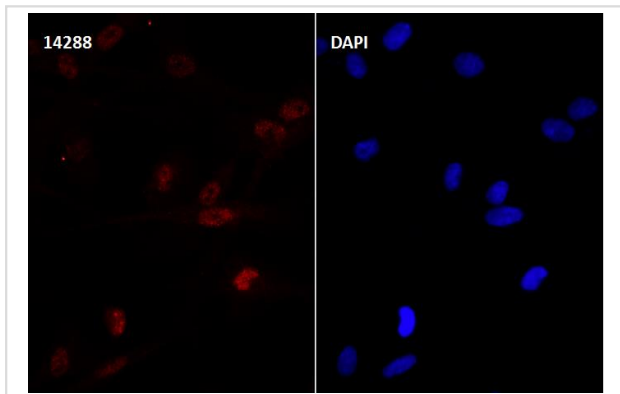
All lanes : Tau (Phospho-Ser404) Rabbit mAb at 1/1k dilution
 Lane 1 : Mouse kidney lysate
 Lysates/proteins at 20 µg per lane.
 Secondary All lanes : Goat Anti-Rabbit IgG H&L (HRP) at 1/20000 dilution
 Predicted band size: 50-70 kDa
 Observed band size: 55 kDa
 Exposure time: 8 seconds



All lanes : Tau (Phospho-Ser404) Rabbit mAb at 1/1k dilution
 Lane 1 : Mouse cerebellum lysate
 Lane 2 : Mouse hippocampus Lysates
 Lane 3 : Rat cerebellum lysate
 Lane 4 : Rat hippocampus Lysates
 proteins at 20 µg per lane.
 Secondary All lanes : Goat Anti-Rabbit IgG H&L (HRP) at 1/20000 dilution
 Predicted band size: 50-70 kDa
 Observed band size: 55 kDa
 Exposure time: 12 seconds



Formalin-fixed;paraffin-embedded mouse brain tissue stained for Tau (Phospho-Ser404) using 14288 at 1/100 dilution in immunohistochemical analysis.



Immunocytochemistry/ Immunofluorescence Tau (Phospho-Ser404) antibody (14288)
 ICC/IF staining of Tau (Phospho-Ser404) in SH-SY5Y cells. Cells were fixed with 4% Paraformaldehyde permeabilized with 0.1% Triton X-100. Samples were incubated with 14288 at a working dilution of 1/100. The secondary antibody was Alexa FluorB 647 goat anti rabbit;used at a dilution of 1/500. Nuclei were counterstained with DAPI.

Product Description

Promotes microtubule assembly and stability, and might be involved in the establishment and maintenance of neuronal polarity. The C-terminus binds axonal microtubules while the N-terminus binds neural plasma membrane components, suggesting that tau functions as a linker protein between both.

Published Papers

Zhang Wei-Gang, Ding Jian, Wang Lei, Wu Cheng-Jun, Mao Jia-Yue, Ding Kun, Zhang Cui, Hu Ze-Bo, Li Shu, Wang Lin et al., Tomatidine Ameliorates Diabetes β • Induced Cognitive Impairment and Tau Hyperphosphorylation Through the AMPK β • TFEB Pathway, Journal of neurochemistry, (2025)

PMID:40387453

Note: This product is for in vitro research use only and is not intended for use in humans or animals.