

## FoxO1 Polyclonal Antibody

Catalog No: #21138



Package Size: #21138-1 50ul #21138-2 100ul

Orders: [order@signalwayantibody.com](mailto:order@signalwayantibody.com)Support: [tech@signalwayantibody.com](mailto:tech@signalwayantibody.com)

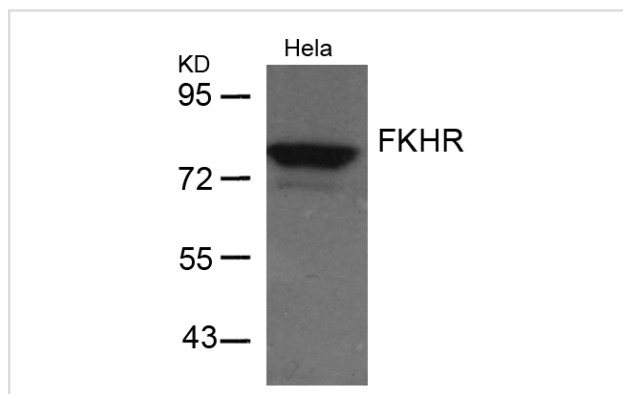
## Description

Product Name	FoxO1 Polyclonal Antibody
Host Species	Rabbit
Clonality	Polyclonal
Purification	Antibodies were produced by immunizing rabbits with synthetic peptide and KLH conjugates. Antibodies were purified by affinity-chromatography using epitope-specific peptide.
Applications	WB IHC IF
Species Reactivity	Human;Mouse;Rat
Specificity	The antibody detects endogenous level of total FKHR protein.
Immunogen Type	Peptide-KLH
Immunogen Description	Peptide sequence around aa.254~258 (A-A-S-M-D) derived from Human FKHR/FOXO1A.
Conjugates	Unconjugated
Target Name	FKHR
Other Names	FOXO1
Accession No.	Swiss-Prot: Q12778NCBI Protein: NP_002006.2
Calculated MW	69kDa
SDS-PAGE MW	78-82kDa
Concentration	1.0mg/ml
Formulation	Supplied at 1.0mg/mL in phosphate buffered saline (without Mg <sup>2+</sup> and Ca <sup>2+</sup> ), pH 7.4, 150mM NaCl, 0.02% sodium azide and 50% glycerol.
Storage	Store at -20°C for long term preservation (recommended). Store at 4°C for short term use.

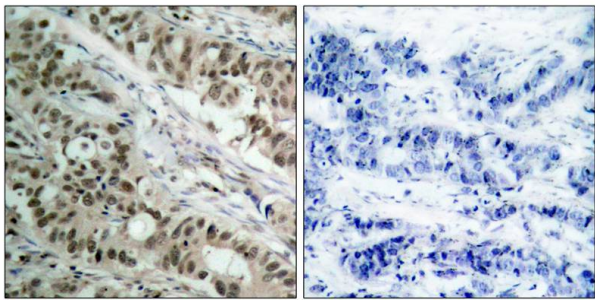
## Application Details

WB 1:500-2000; IHC 1:50-300; IF 1:50-300;

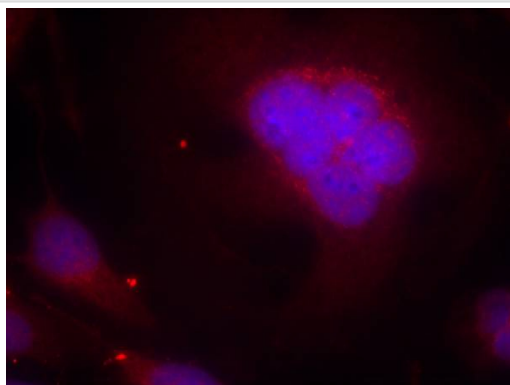
## Images



Western blot analysis of extracts from HeLa cells using FKHR(Ab-256) Antibody #21138.



Immunohistochemical analysis of paraffin-embedded human breast carcinoma tissue using FKHR(Ab-256) Antibody #21138(left) or the same antibody preincubated with blocking peptide(right).



Immunofluorescence staining of methanol-fixed HeLa cells using FKHR(Ab-256) Antibody #21138.

## Background

FKHR belongs to the forkhead family of transcription factors, which are characterized by a distinct forkhead domain. It may play a role in myogenic growth and differentiation. The mammalian DAF-16-like transcription factors, FKHR, FKHL1, and AFX, function as key regulators of insulin signaling, cell cycle progression, and apoptosis downstream of phosphoinositide 3-kinase. Gene activation through binding to insulin response sequences has been essential for mediating these functions. D-type Cyclins (in Class III) is required for FKHR mediated inhibition of cell cycle progression and transformation. FKHR gene is mapped to chromosome 13q14

Gan L, et al. (2005) J Neurochem; 93(5): 1209-19.

Smith WW, et al. (2005) J Cell Biol; 169(2): 331-9.

Di Maira G, et al. (2005) Cell Death Differ; 12(6): 668-77.

Horn S, et al. (2004) Leukemia; 18(11): 1839-49.

Zhao X, et al. (2004) Biochem J 4; 378(Pt 3): 839-49.

## Published Papers

Gaofeng Zhu;Xiaoyong Li;Qinyuan Gao;Yuanjun Wang;Jiajie Li;Zena Huang;Yan Lin et al., GYY4137 protects against type 2 diabetes mellitus-associated myocardial autophagy by suppressing FOXO1 signal pathway., (2025)

[PMID:39777025](#)

**Note:** This product is for in vitro research use only and is not intended for use in humans or animals.