

MET Polyclonal Antibody

Catalog No: #21220



Package Size: #21220-1 50ul #21220-2 100ul

Orders: order@signalwayantibody.com

Support: tech@signalwayantibody.com

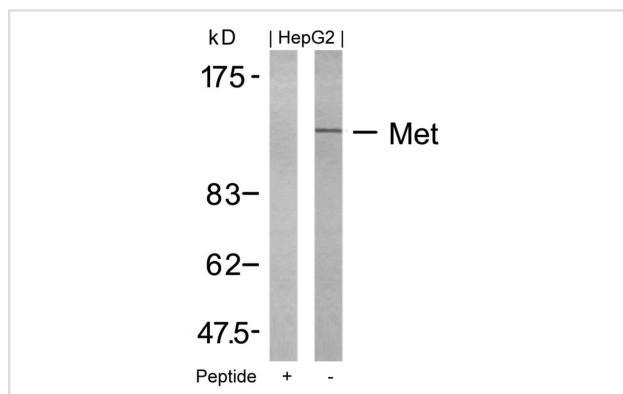
Description

Product Name	MET Polyclonal Antibody
Host Species	Rabbit
Clonality	Polyclonal
Purification	Antibodies were produced by immunizing rabbits with synthetic peptide and KLH conjugates. Antibodies were purified by affinity-chromatography using epitope-specific peptide.
Applications	WB
Species Reactivity	Human;Mouse;Rat
Specificity	The antibody detects endogenous level of total Met protein.
Immunogen Type	Peptide-KLH
Immunogen Description	Peptide sequence around aa.1232~1236 (K-E-Y-Y-S) derived from Human Met.
Conjugates	Unconjugated
Target Name	Met
Other Names	HGF receptor; HGF-SF receptor; Met proto-oncogene tyrosine kinase; c-met; kinase Met
Accession No.	Swiss-Prot: P08581NCBI Protein: NP_000236.2
Calculated MW	145kDa
SDS-PAGE MW	145-170kd
Concentration	1.0mg/ml
Formulation	Supplied at 1.0mg/mL in phosphate buffered saline (without Mg ²⁺ and Ca ²⁺), pH 7.4, 150mM NaCl, 0.02% sodium azide and 50% glycerol.
Storage	Store at -20°C for long term preservation (recommended). Store at 4°C for short term use.

Application Details

WB 1:500-1:2000;

Images



Western blot analysis of extracts from HepG2 cells using Met(Ab-1234) Antibody #21220 and the same antibody preincubated with blocking peptide.

Background

Receptor for hepatocyte growth factor and scatter factor. Has a tyrosine-protein kinase activity. Functions in cell proliferation, scattering, morphogenesis and survival.

Gherardi E. et al. (2003).Proc Natl Acad Sci U S A. 100(21): 12039-12044.

Shiu SH. et al. (2001) Proc Natl Acad Sci U S A. 98(19): 10763-10768.

Hughes AL. et al. (2001) Genome Res. 11(5): 771-780.

Onuchic LF. et al. (2002) Am J Hum Genet. 70(5): 1305-1317.

Published Papers

Luo W, Huang B, Li Z et al., MicroRNA-449a Is Downregulated in Non-Small Cell Lung Cancer and Inhibits Migration and Invasion by Targeting c-Met., PLoS ONE, 8(5): e64759(2013)

[PMID:23734217](#)

Na Li, Hanjiang Fu, Yi Tie et al., miR-34a inhibits migration and invasion by down-regulation of c-Met expression in human hepatocellular carcinoma cells., Cancer Letters, 275(1):44-53(2008)

[PMID:19006648](#)

et al., miR-34a Inhibits Migration and Invasion by Down-Regulation of c-Met Expression in Human Hepatocellular Carcinoma Cells.In Cancer Lett on 2009 Mar 8 by Na Li, Hanjiang Fu,et al..PMID:19006648, , (2009)

[PMID:19006648](#)

et al., MicroRNA-449a is downregulated in non-small cell lung cancer and inhibits migration and invasion by targeting c-Met. In PLoS One on 2013 May 29 by Wenting Luo,

Bo Huang, et al..PMID: 23734217, , (2013)

[PMID:23734217](#)

Note: This product is for in vitro research use only and is not intended for use in humans or animals.