

PCNA Mouse Monoclonal Antibody

Catalog No: #21801

Package Size: #21801-1 50ul #21801-2 100ul

Orders: order@signalwayantibody.comSupport: tech@signalwayantibody.com

Description

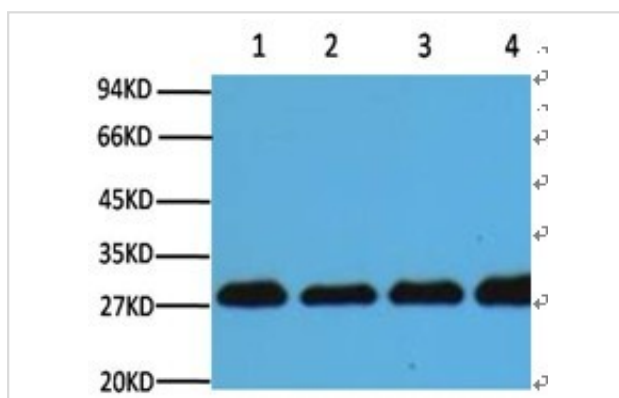
Product Name	PCNA Mouse Monoclonal Antibody
Host Species	Mouse
Clonality	Monoclonal
Purification	Affinity-chromatography
Applications	WB IHC
Species Reactivity	Human;Mouse;Rat
Immunogen Type	Peptide-KLH
Immunogen Description	Mouse monoclonal antibody is prepared by immunizing a synthetic peptide.
Conjugates	Unconjugated
Target Name	PCNA
Other Names	Cyclin; DNA polymerase delta auxiliary protein; MGC8367; PCNA; Proliferating cell nuclear antigen.
SDS-PAGE MW	29KD
Concentration	1.0mg/ml
Formulation	Mouse IgG1 in phosphate buffered saline, pH 7.4, 150mM NaCl, 0.02% sodium azide and 50% glycerol.
Storage	Store at -20°C/1 year

Application Details

WB: 1:3000~1:10000

IHC: 1:200

Images



Western blot analysis of Hela (1), Rat brain (2), NIH 3T3 (3), 293T(4) with PCNA mouse mAb(12D10) diluted at 1:5000.

Background

PCNA is a marker for cells in early G1 phase and S phase of the cell cycle. It is found in the nucleus and is a cofactor of DNA polymerase delta. PCNA acts as a homotrimer and helps increase the processivity of leading strand synthesis during DNA replication. In response to DNA damage, PCNA is

ubiquitinated and is involved in the RAD6 dependent DNA repair pathway. Two transcript variants encoding the same protein have been found for PCNA. Pseudogenes of this gene have been described on chromosome 4 and on the X chromosome.

Note: This product is for in vitro research use only and is not intended for use in humans or animals.