

MAN1B1 antibody

Catalog No: #22044

Package Size: #22044 100ul

Orders: order@signalwayantibody.comSupport: tech@signalwayantibody.com

Description

Product Name	MAN1B1 antibody
Host Species	Rabbit
Clonality	Polyclonal
Purification	Purified by antigen-affinity chromatography.
Applications	WB IHC
Species Reactivity	Hu
Immunogen Type	Recombinant protein
Immunogen Description	Recombinant protein fragment contain a sequence corresponding to a region within amino acids 414 and 670 of MAN1B1
Target Name	MAN1B1
Other Names	MANA-ER
Accession No.	NCBI Gene ID: 11253NCBI mRNA#: NM_016219NCBI Protein#: NP_057303
Concentration	0.8mg/ml
Formulation	Supplied in 0.1M Tris-buffered saline with 10% Glycerol (pH7.0). 0.01% Thimerosal was added as a preservative.
Storage	Store at -20°C for long term preservation (recommended). Store at 4°C for short term use.

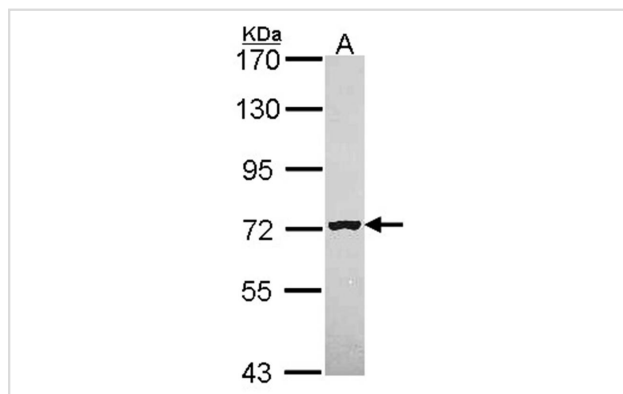
Application Details

Predicted MW: 80kd

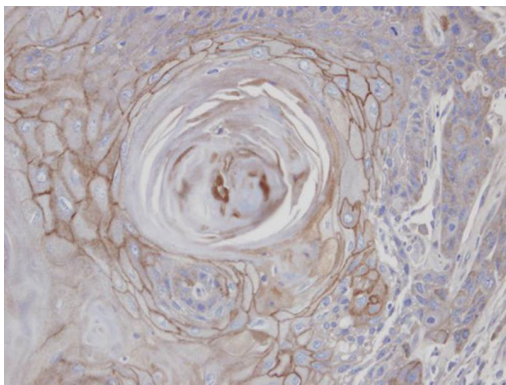
Western blotting: 1:500-1:3000

Immunohistochemistry: 1:100-1:250

Images



Sample (30 ug of whole cell lysate)
 A: HeLa
 7.5% SDS PAGE
 MAN1B1 antibody diluted at 1: 1000



Immunohistochemical analysis of paraffin-embedded SCC25 xenograft, using MAN1B1 antibody at 1: 100 dilution.

Note: This product is for in vitro research use only and is not intended for use in humans or animals.