

Seasonal H1N1 Hemagglutinin Monoclonal Antibody

Catalog No: #26042



Package Size: #26042 100ul

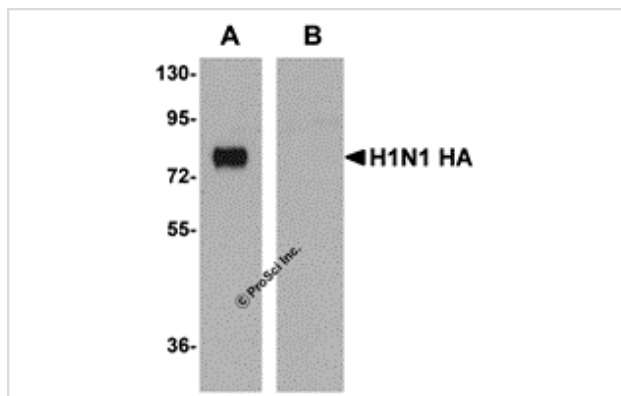
Orders: order@signalwayantibody.com

Support: tech@signalwayantibody.com

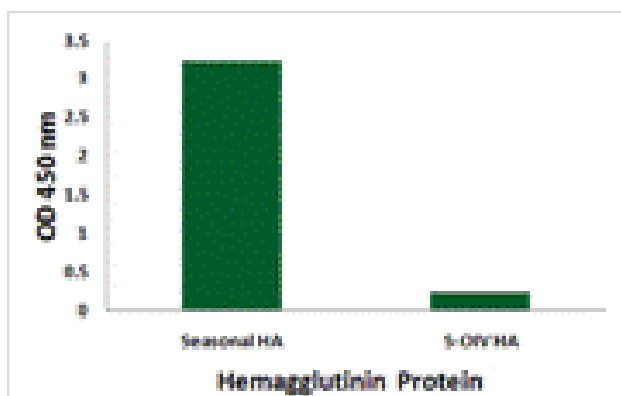
Description

| | |
|-----------------------|---|
| Product Name | Seasonal H1N1 Hemagglutinin Monoclonal Antibody |
| Host Species | Mouse |
| Clonality | Monoclonal |
| Clone No. | mAb (Clone 7H12F6) |
| Purification | Seasonal H1N1 Hemagglutinin Monoclonal Antibody is Protein G purified. |
| Applications | ELISA WB |
| Species Reactivity | Virus |
| Immunogen Type | Peptide |
| Immunogen Description | Raised against a synthetic peptide from the Hemagglutinin protein. |
| Conjugates | Unconjugated |
| Target Name | Seasonal H1N1 Hemagglutinin |
| Other Names | Seasonal Influenza A H1N1 Hemagglutinin (7H12F6): Common flu H1, flu H1, HA |
| Accession No. | ACA28844 |
| Concentration | 1mg/ml |
| Formulation | Supplied in PBS containing 0.02% sodium azide. |
| Storage | Can be stored at -20°C, stable for one year. |

Images



Recombinant seasonal Influenza HA (lane A) or swine-origin Influenza HA (lane B) were probed (1 ug/mL) using monoclonal seasonal Influenza A HA.



Seasonal Influenza A Hemagglutinin antibody (Cat. No. PM-5533; 2 ug/mL) recognizes seasonal influenza A (H1N1), but not swine-origin influenza A (S-OIV, H1N1), Hemagglutinin protein in ELISA.

Background

Influenza A virus has one of sixteen possible Hemagglutinin (HA) surface proteins and one of nine possible Neuraminidase (NA) surface proteins. In early 2009, a novel H1N1 swine-origin influenza (S-OIV) A virus was identified in specimens obtained from patients in Mexico and the United States. The genetic make-up of this swine flu virus is unlike any other: it is an H1N1 strain that combines a triple assortment first identified in 1998 including human, swine, and avian influenza with two new pig H3N2 virus genes from Eurasia, themselves of recent human origin. This antibody is specific for the seasonal H1N1 influenza Hemagglutinin and will not recognize the corresponding Hemagglutinin sequence from the swine-origin H1N1 influenza (A/California/14/2009 (H1N1)).

Note: This product is for in vitro research use only and is not intended for use in humans or animals.