

CARM1 Monoclonal Antibody

Catalog No: #27011



Package Size: #27011-1 50ul #27011-2 100ul

Orders: order@signalwayantibody.comSupport: tech@signalwayantibody.com

Description

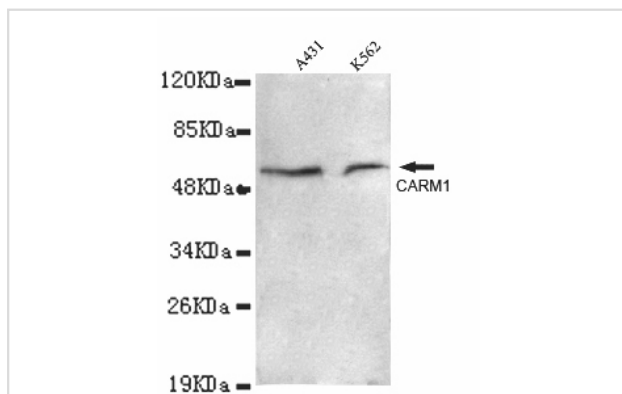
Product Name	CARM1 Monoclonal Antibody
Host Species	Mouse
Clonality	Monoclonal
Isotype	IgG1
Purification	Purified by antigen-affinity chromatography.
Applications	WB
Species Reactivity	Hu Rt Ms P
Immunogen Type	Recombinant protein
Immunogen Description	Recombinant fragment, corresponding to amino acids 351aa-609aa of human CARM1(C-terminus).
Conjugates	Unconjugated
Target Name	CARM1
Other Names	histone-arginine methyltransferase CARM1 □ protein arginine N-methyltransferase 4
Accession No.	UniProt:Q86X55 NCBI Gene ID:10498
Formulation	Purified mouse monoclonal in buffer containing 0.1M Tris-Glycine (pH 7.4, 150 mM NaCl) with 0.2% sodium azide, 50%,glycerol
Storage	store at -20°C

Application Details

Predicted MW: 63kd

Western blotting: 1:1000

Images



1:1000 dilution of this antibody detected CARM1 on 40ug of cell lysates

Note: This product is for in vitro research use only and is not intended for use in humans or animals.