

## CBX5 Monoclonal Antibody

Catalog No: #27012



Package Size: #27012-1 50ul #27012-2 100ul

Orders: order@signalwayantibody.com

Support: tech@signalwayantibody.com

## Description

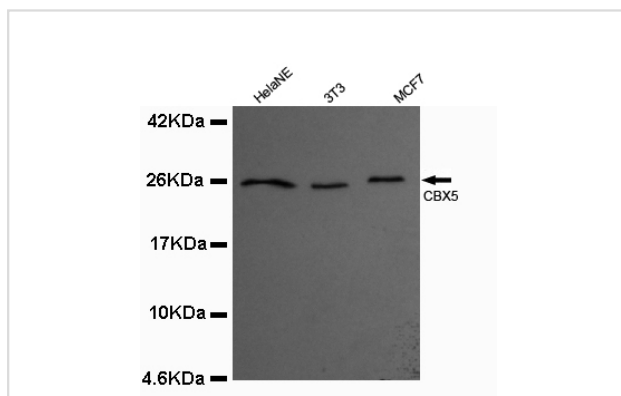
Product Name	CBX5 Monoclonal Antibody
Host Species	Mouse
Clonality	Monoclonal
Isotype	IgG2b
Purification	Purified by antigen-affinity chromatography.
Applications	WB ICC
Species Reactivity	Hu Ms P Rt D
Immunogen Type	Recombinant protein
Immunogen Description	Recombinant full length protein (191aa) of human CBX5 .
Conjugates	Unconjugated
Target Name	CBX5
Other Names	chromobox protein homolog 5 <input type="checkbox"/> HP1-ALPHA <input type="checkbox"/> HP1Hs alpha <input type="checkbox"/> antigen p25 <input type="checkbox"/> HP1 alpha homolog <input type="checkbox"/> heterochromatin protein 1-alpha <input type="checkbox"/> heterochromatin protein 1 homolog alpha <input type="checkbox"/> chromobox homolog 5 (HP1 alpha homolog, Drosophila)
Accession No.	UniProt:P45973 NCBI Gene ID:23468
Formulation	Purified mouse monoclonal in buffer containing 0.1M Tris-Glycine (pH 7.4, 150 mM NaCl) with 0.2% sodium azide, 50% glycerol
Storage	store at -20°C

## Application Details

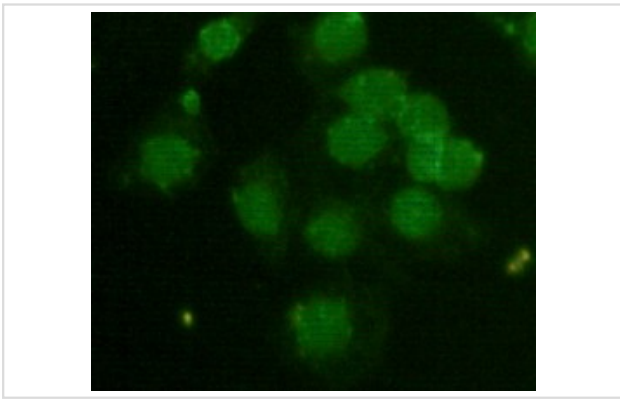
Predicted MW: 26kd

Western blotting: 1:1000

## Images



1:1000 dilution of this antibody detected CBX5 on 40ug of cell lysates



1:100 dilution from a previous lot detected CBX5 in HeLa

---

Note: This product is for in vitro research use only and is not intended for use in humans or animals.