

Pyruvate Dehydrogenase(C-term) Monoclonal Antibody

Catalog No: #27025

Package Size: #27025-1 50ul #27025-2 100ul

Orders: order@signalwayantibody.comSupport: tech@signalwayantibody.com

Description

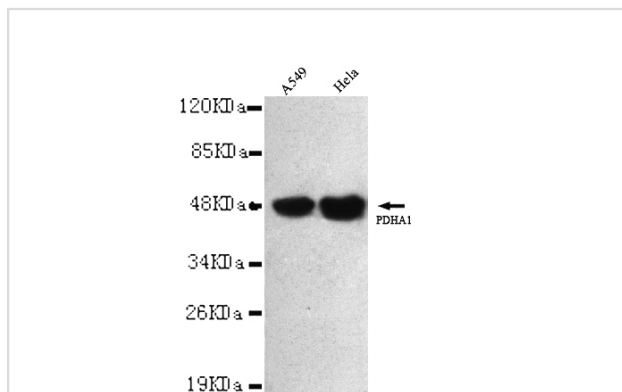
Product Name	Pyruvate Dehydrogenase(C-term) Monoclonal Antibody
Host Species	Mouse
Clonality	Monoclonal
Isotype	IgG1
Purification	Purified by antigen-affinity chromatography.
Applications	WB ICC
Species Reactivity	Hu D Rt Ms P
Immunogen Type	Recombinant protein
Immunogen Description	Recombinant fragment , corresponding to amino acids 131aa-389aa of human PDHA1 (C-terminus).
Conjugates	Unconjugated
Target Name	Pyruvate Dehydrogenase
Other Names	pyruvate dehydrogenase E1 component subunit alpha, somatic form, mitochondrial <input type="checkbox"/> PDHE1-A type I <input type="checkbox"/> pyruvate dehydrogenase complex, E1-alpha polypeptide 1
Accession No.	UniProt:P08559 NCBI Gene ID:5160
Formulation	Purified mouse monoclonal in buffer containing 0.1M Tris-Glycine (pH 7.4, 150 mM NaCl) with 0.2% sodium azide, 50%,glycerol
Storage	store at -20°C

Application Details

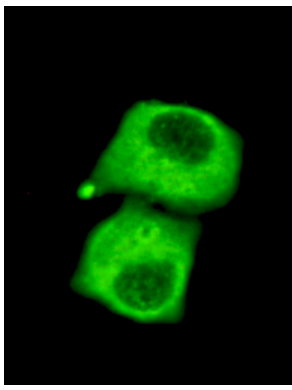
Predicted MW: 50kd

Western blotting: 1:1000

Images



1:3000 dilution of this antibody detected PDHA1 on 40ug of cell lysates



HeLa cells using anti- PDHA1 (C-terminus) antibody diluted 1:150

Note: This product is for in vitro research use only and is not intended for use in humans or animals.