

EPCAM Monoclonal Antibody

Catalog No: #27030



Package Size: #27030-1 50ul #27030-2 100ul

Orders: order@signalwayantibody.com

Support: tech@signalwayantibody.com

Description

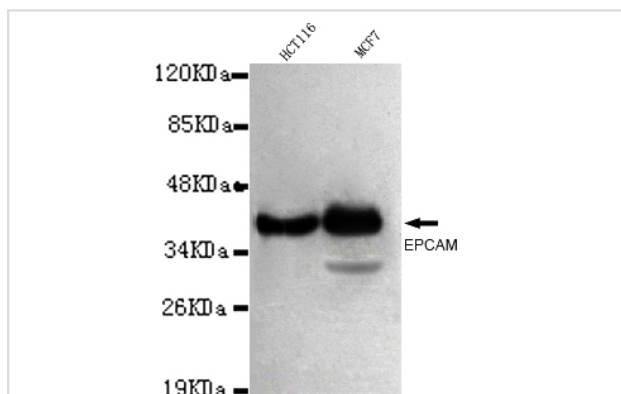
Product Name	EPCAM Monoclonal Antibody
Host Species	Mouse
Clonality	Monoclonal
Isotype	IgG1
Purification	Purified by antigen-affinity chromatography.
Applications	WB
Species Reactivity	Human;Mouse
Immunogen Type	Recombinant protein
Immunogen Description	Recombinant fragment of human EPCAM (N-terminus).
Conjugates	Unconjugated
Target Name	EPCAM
Other Names	epithelial cell adhesion molecule <input type="checkbox"/> epithelial glycoprotein 314 <input type="checkbox"/> human epithelial glycoprotein-2 <input type="checkbox"/> cell surface glycoprotein Trop-1 <input type="checkbox"/> adenocarcinoma-associated antigen <input type="checkbox"/> tumor-associated calcium signal transducer 1 <input type="checkbox"/> major gastrointestinal
Accession No.	UniProt:P16422 NCBI Gene ID:4072
Formulation	Purified mouse monoclonal in buffer containing 0.1M Tris-Glycine (pH 7.4, 150 mM NaCl) with 0.2% sodium azide, 50%,glycerol
Storage	store at -20°C

Application Details

Predicted MW: 39kd

Western blotting: 1:1000

Images



1:1000 dilution of this antibody detected EPCAM on 40ug of cell lysates

Note: This product is for in vitro research use only and is not intended for use in humans or animals.