

## CHD3 Monoclonal Antibody

Catalog No: #27035

Package Size: #27035-1 50ul #27035-2 100ul

Orders: order@signalwayantibody.com

Support: tech@signalwayantibody.com

## Description

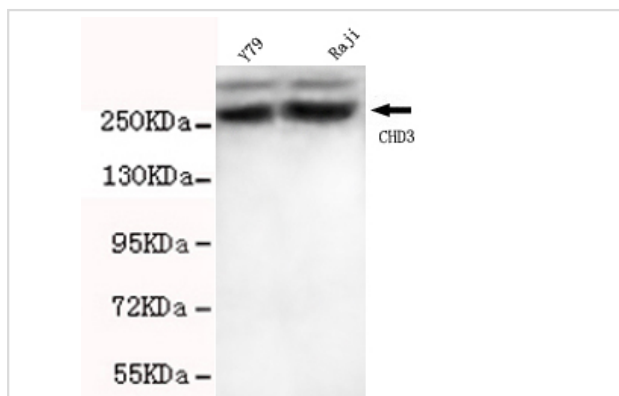
Product Name	CHD3 Monoclonal Antibody
Host Species	Mouse
Clonality	Monoclonal
Isotype	IgG1
Purification	Purified by antigen-affinity chromatography.
Applications	WB ICC IHC FC
Species Reactivity	Hu P D Ms Rt
Immunogen Type	Recombinant protein
Immunogen Description	Recombinant fragment, corresponding to amino acids 193aa-479aa of human CHD3(C-terminus).
Conjugates	Unconjugated
Target Name	CHD3
Other Names	chromodomain-helicase-DNA-binding protein 3 <input type="checkbox"/> hZFH <input type="checkbox"/> CHD-3 <input type="checkbox"/> zinc finger helicase <input type="checkbox"/> ATP-dependent helicase CHD3 <input type="checkbox"/> mi-2 autoantigen 240 kDa protein <input type="checkbox"/> zinc-finger helicase (Snf2-like)
Accession No.	UniProt:Q12873 NCBI Gene ID:1107
Formulation	Purified mouse monoclonal in buffer containing 0.1M Tris-Glycine (pH 7.4, 150 mM NaCl) with 0.2% sodium azide, 50% glycerol
Storage	store at -20°C

## Application Details

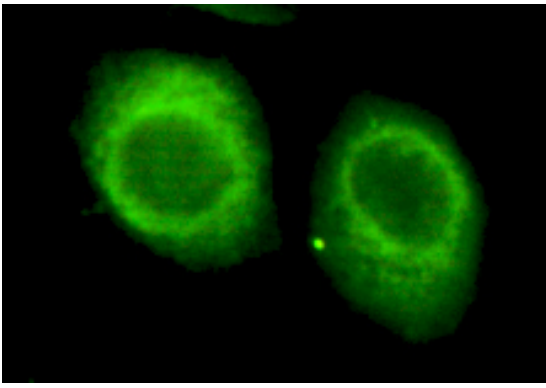
Predicted MW: 260kd

Western blotting: 1:1000

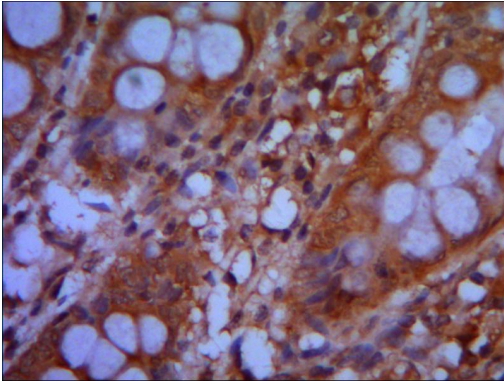
## Images



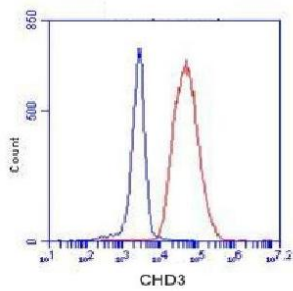
1:1000 dilution of this antibody detected CHD3 on 40ug of cell lysates



HeLa cells using anti- CHD3 (C-terminus) antibody diluted 1:150



Paraffin--embedded human colon using anti- CHD3 (C-terminus) diluted 1:50-1:100



HeLa cells stained with SMC1A (red, 1:100 dilution), followed by FITC-conjugated goat anti-mouse IgG. Black line histogram represents the isotype control, normal mouse IgG

Note: This product is for in vitro research use only and is not intended for use in humans or animals.