

MAP2(N-term) Monoclonal Antibody

Catalog No: #27037



Package Size: #27037-1 50ul #27037-2 100ul

Orders: order@signalwayantibody.com

Support: tech@signalwayantibody.com

Description

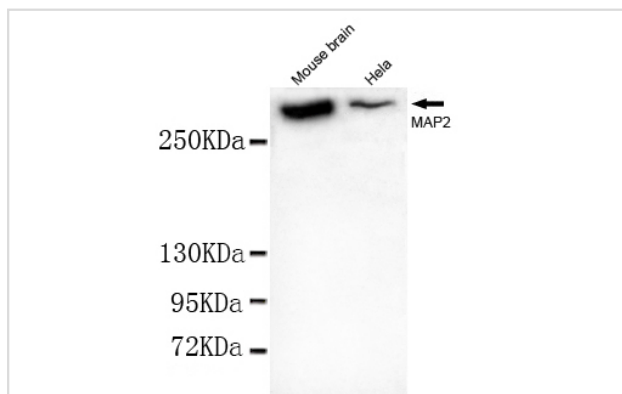
Product Name	MAP2(N-term) Monoclonal Antibody
Host Species	Mouse
Clonality	Monoclonal
Isotype	IgG2b
Purification	Purified by antigen-affinity chromatography.
Applications	WB ICC
Species Reactivity	Hu B Ms Rt P
Immunogen Type	Recombinant protein
Immunogen Description	Recombinant fragment, corresponding to amino acids 1636aa-1855aa of human MAP2(C-terminus).
Conjugates	Unconjugated
Target Name	MAP2
Other Names	microtubule-associated protein 2 □MAP-2
Accession No.	UniProt:P11137 NCBI Gene ID:4133
Formulation	Purified mouse monoclonal in buffer containing 0.1M Tris-Glycine (pH 7.4, 150 mM NaCl) with 0.2% sodium azide, 50% glycerol
Storage	store at -20°C

Application Details

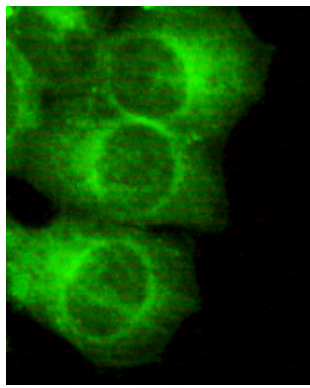
Predicted MW: 300kd

Western blotting: 1:1000

Images



1:1000 dilution of this antibody detected MAP2 on 40ug of cell lysates



HeLa cells using anti- MAP2 (N-terminus) antibody diluted 1:150

Note: This product is for in vitro research use only and is not intended for use in humans or animals.