

SMAD5(C-term) Monoclonal Antibody

Catalog No: #27047

Package Size: #27047-1 50ul #27047-2 100ul

Orders: order@signalwayantibody.com

Support: tech@signalwayantibody.com

Description

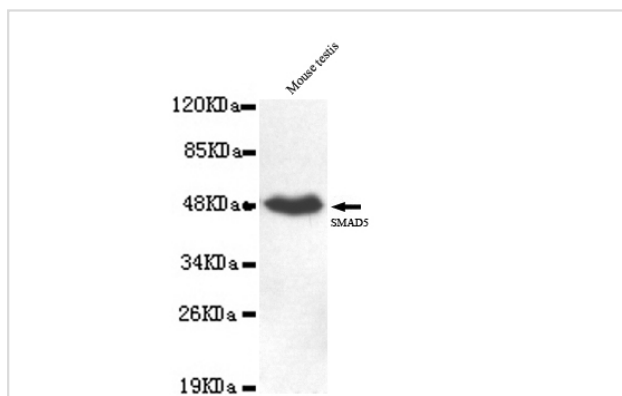
Product Name	SMAD5(C-term) Monoclonal Antibody
Host Species	Mouse
Clonality	Monoclonal
Isotype	IgG1
Purification	Purified by antigen-affinity chromatography.
Applications	WB ICC FC
Species Reactivity	Hu P Rt Ms
Immunogen Type	Recombinant protein
Immunogen Description	Recombinant fragment, corresponding to amino acids 239aa-372aa of human SMAD5 (C-terminus).
Conjugates	Unconjugated
Target Name	SMAD5
Other Names	mothers against decapentaplegic homolog 5 □SMA- and MAD-related protein 5 □SMAD, mothers against DPP homolog 5 □MAD, mothers against decapentaplegic homolog 5 □mothers against decapentaplegic, drosophila, homolog of, 5
Accession No.	UniProt:Q99717 NCBI Gene ID:4090
Formulation	Purified mouse monoclonal in buffer containing 0.1M Tris-Glycine (pH 7.4, 150 mM NaCl) with 0.2% sodium azide, 50%,glycerol
Storage	store at -20°C

Application Details

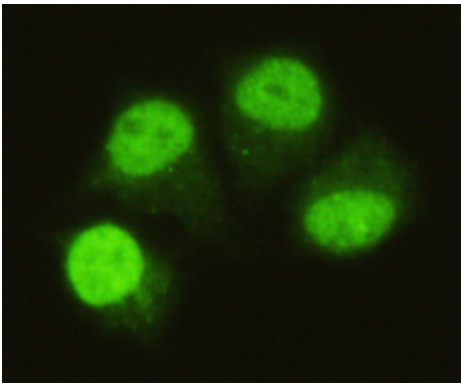
Predicted MW: 52kd

Western blotting: 1:1000

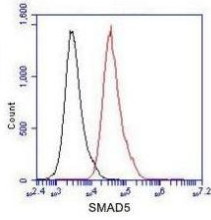
Images



1:1000 dilution of this antibody detected SMAD5 on 40ug of cell lysates



HeLa cells using anti- SMAD5 (C-terminus) antibody diluted 1:150; Flow Cytometry analysis Jurkat cells stained with SMAD5 (red, 1:100 dilution), followed by FITC-conjugated goat anti-mouse IgG. Black line histogram represents the isotype control, normal m



Jurkat cells stained with SMAD5 (red, 1:100 dilution), followed by FITC-conjugated goat anti-mouse IgG. Black line histogram represents the isotype control, normal mouse IgG

Note: This product is for in vitro research use only and is not intended for use in humans or animals.