

## ATP-Citrate Lyase(C-term) Monoclonal Antibody

Catalog No: #27048

Package Size: #27048-1 50ul #27048-2 100ul

Orders: order@signalwayantibody.com

Support: tech@signalwayantibody.com

## Description

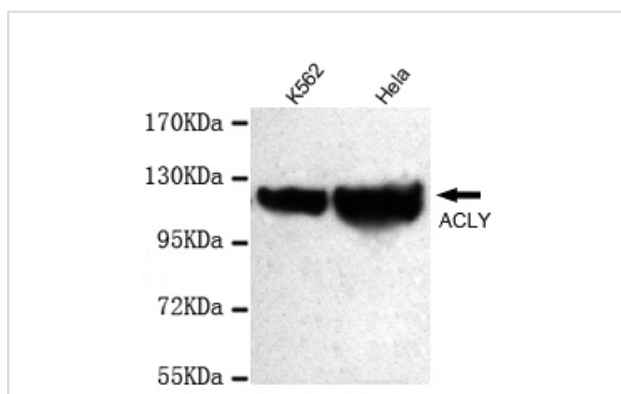
Product Name	ATP-Citrate Lyase(C-term) Monoclonal Antibody
Host Species	Mouse
Clonality	Monoclonal
Isotype	IgG2a
Purification	Purified by antigen-affinity chromatography.
Applications	WB ICC FC
Species Reactivity	Hu Ms Rt P
Immunogen Type	Recombinant protein
Immunogen Description	Recombinant fragment, corresponding to amino acids 734aa-983aa of human ACLY (C-terminus).
Conjugates	Unconjugated
Target Name	ATP-Citrate Lyase
Other Names	ATP-citrate synthase □ATP citrate synthase □citrate cleavage enzyme □ATP-citrate (pro-S-)-lyase
Accession No.	UniProt:P53396 NCBI Gene ID:47
Formulation	Purified mouse monoclonal in buffer containing 0.1M Tris-Glycine (pH 7.4, 150 mM NaCl) with 0.2% sodium azide, 50%,glycerol
Storage	store at -20°C

## Application Details

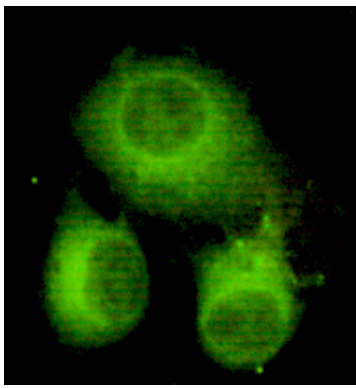
Predicted MW: 120kd

Western blotting: 1:1000

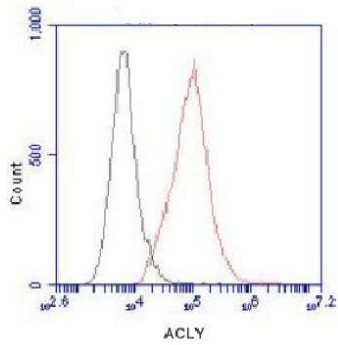
## Images



1:1000 dilution of this antibody detected ACLY on 40ug of cell lysates



HeLa cells using anti- ACLY(C-terminus)antibody diluted 1:150



HeLa cells stained with ACLY (red, 1:100 dilution), followed by FITC-conjugated goat anti-mouse IgG. Black line histogram represents the isotype control, normal mouse IgG

---

Note: This product is for in vitro research use only and is not intended for use in humans or animals.