

MTMR3 Polyclonal Antibody

Catalog No: #27502

Package Size: #27502-1 50ul #27502-2 100ul

Orders: order@signalwayantibody.com

Support: tech@signalwayantibody.com

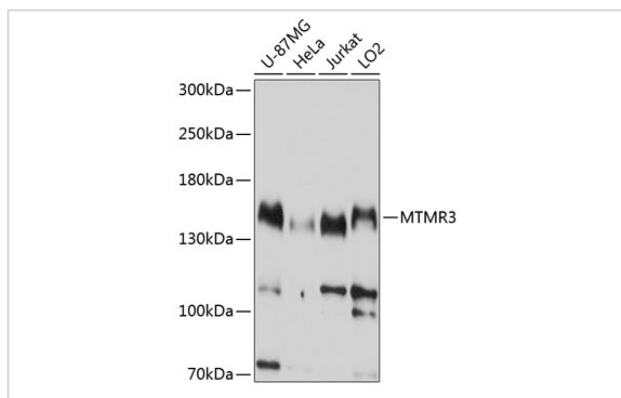
Description

Product Name	MTMR3 Polyclonal Antibody
Host Species	Rabbit
Clonality	Polyclonal
Isotype	IgG
Purification	Affinity purification
Applications	WB,IF
Species Reactivity	Human;Mouse
Immunogen Description	Recombinant fusion protein of human MTMR3 (NP_066576.1).
Conjugates	Unconjugated
Other Names	MTMR3; FYVE-DSP1; ZFYVE10; myotubularin-related protein 3
Accession No.	Swiss-Prot#:Q13615NCBI Gene ID:8897
Calculated MW	134kDa
Formulation	Avoid freeze / thaw cycles. Buffer: PBS with 50% glycerol, pH7.4.
Storage	Store at -20°C

Application Details

WB □ 1:500 - 1:2000IF □ 1:50 - 1:100

Images



Western blot analysis of extracts of various cell lines, using MTMR3 antibody.

Background

This gene encodes a member of the myotubularin dual specificity protein phosphatase gene family. The encoded protein is structurally similar to myotubularin but in addition contains a FYVE domain and an N-terminal PH-GRAM domain. The protein can self-associate and also form heteromers with another myotubularin related protein. The protein binds to phosphoinositide lipids through the PH-GRAM domain, and can hydrolyze phosphatidylinositol(3)-phosphate and phosphatidylinositol(3,5)-biphosphate in vitro. The encoded protein has been observed to have a perinuclear, possibly membrane-bound, distribution in cells, but it has also been found free in the cytoplasm. Multiple transcript variants encoding different isoforms have been found for this gene.

Note: This product is for in vitro research use only and is not intended for use in humans or animals.