

# ALAD Polyclonal Antibody

Catalog No: #27690



Package Size: #27690-1 50ul #27690-2 100ul

Orders: [order@signalwayantibody.com](mailto:order@signalwayantibody.com)

Support: [tech@signalwayantibody.com](mailto:tech@signalwayantibody.com)

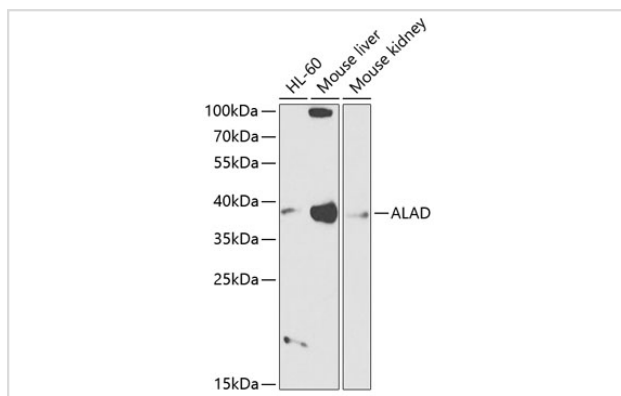
## Description

Product Name	ALAD Polyclonal Antibody
Host Species	Rabbit
Clonality	Polyclonal
Isotype	IgG
Purification	Affinity purification
Applications	WB,IF
Species Reactivity	Human;Mouse
Immunogen Description	Recombinant fusion protein of human ALAD (NP_000022.3).
Conjugates	Unconjugated
Other Names	ALAD; ALADH; PBGS; aminolevulinatase
Accession No.	Swiss-Prot#:P13716NCBI Gene ID:210
Calculated MW	36kDa
Formulation	Avoid freeze / thaw cycles. Buffer: PBS with 50% glycerol, pH7.4.
Storage	Store at -20°C

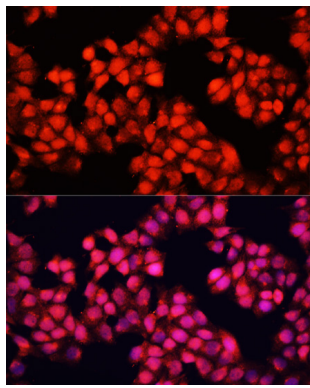
## Application Details

WB □ 1:500 - 1:2000 IF □ 1:50 - 1:200

## Images



Western blot analysis of extracts of various cell lines, using ALAD antibody.



Immunofluorescence analysis of HeLa cells using ALAD antibody.

## Background

The ALAD enzyme is composed of 8 identical subunits and catalyzes the condensation of 2 molecules of delta-aminolevulinic acid to form porphobilinogen (a precursor of heme, cytochromes and other hemoproteins). ALAD catalyzes the second step in the porphyrin and heme biosynthetic pathway; zinc is essential for enzymatic activity. ALAD enzymatic activity is inhibited by lead and a defect in the ALAD structural gene can cause increased sensitivity to lead poisoning and acute hepatic porphyria. Alternative splicing of this gene results in multiple transcript variants encoding different isoforms.

Note: This product is for in vitro research use only and is not intended for use in humans or animals.