

Collagen II Antibody

Catalog No: #29157



Package Size: #29157-1 50ul #29157-2 100ul

Orders: order@signalwayantibody.com

Support: tech@signalwayantibody.com

Description

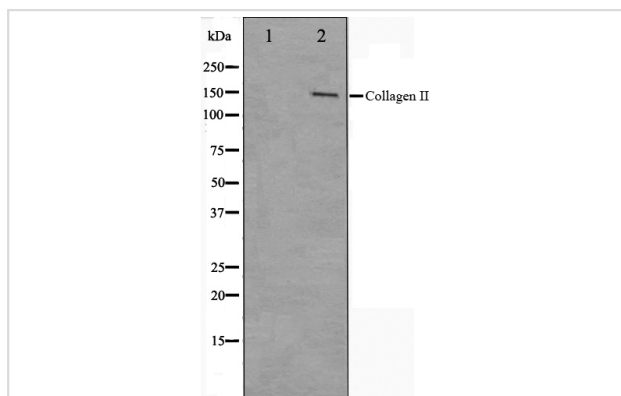
Product Name	Collagen II Antibody
Host Species	Rabbit
Clonality	Polyclonal
Purification	Affinity-chromatography
Applications	WB IHC
Species Reactivity	Human;Mouse;Rat
Specificity	Collagen II antibody detects endogenous levels of total Collagen II
Immunogen Type	Peptide
Immunogen Description	A synthesized peptide derived from human Collagen II
Conjugates	Unconjugated
Target Name	Collagen II
Other Names	Alpha-1 type II collagen; ANFH; AOM; cartilage collagen; Chondrocalcin; CO2A1; COL11A3; COL2A1; Collagen alpha-1(II) chain; collagen II, alpha-1 polypeptide; collagen, type II, alpha 1; MGC131516; SEDC
Accession No.	Swiss-Prot#: P02458
SDS-PAGE MW	140KD
Concentration	1.0mg/ml
Formulation	Rabbit IgG in phosphate buffered saline , pH 7.4, 150mM NaCl, 0.02% sodium azide and 50% glycerol.
Storage	Store at -20°C/1 year

Application Details

WB: 1:500-1:3000

IHC: 1:50-1:200

Images



Western blot analysis on COLO205 cell lysate using Collagen II Antibody

Background

COL2A1 Type II collagen is specific for cartilaginous tissues. It is essential for the normal embryonic development of the skeleton, for linear growth and for the ability of cartilage to resist compressive forces. Belongs to the fibrillar collagen family. Homotrimers of alpha 1(II) chains. 3 isoforms of the human protein are produced by alternative splicing

Published Papers

Yueying Kong;Zijing Lu;Jianan Zhan;Xi Zhou;Shenghua Chen;Qiwei Chen;Haihuan Gong;Xianlin Zhang;Xiaoyan Mao;Yilin Wang;Wenhua Huang et al., Enhancing auricular reconstruction: A biomimetic scaffold with 3D-printed multiscale porous structure utilizing chondrogenic activity ink., (2025)
[PMID:39968521](#)

Note: This product is for in vitro research use only and is not intended for use in humans or animals.