

## NLRP5 Polyclonal Antibody

Catalog No: #31765

Package Size: #31765-1 50ul #31765-2 100ul

Orders: order@signalwayantibody.com

Support: tech@signalwayantibody.com

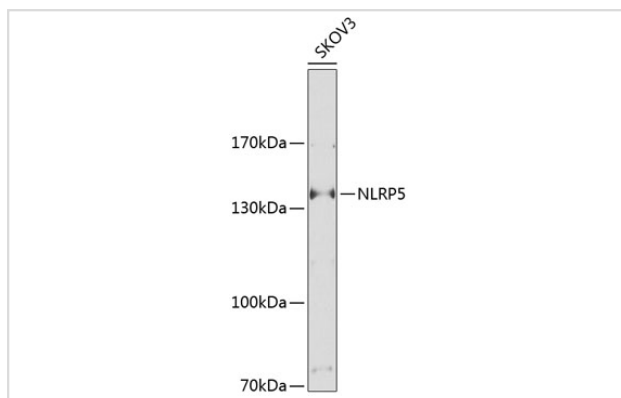
## Description

Product Name	NLRP5 Polyclonal Antibody
Host Species	Rabbit
Clonality	Polyclonal
Isotype	IgG
Purification	Affinity purification
Applications	WB
Species Reactivity	Human;Mouse;Rat
Immunogen Description	Recombinant fusion protein of human NLRP5 (NP_703148.4).
Conjugates	Unconjugated
Other Names	NLRP5; CLR19.8; MATER; NALP5; PAN11; PYPAF8; NLR family pyrin domain containing 5
Accession No.	Swiss-Prot#:P59047NCBI Gene ID:126206
Calculated MW	134kDa
Formulation	Avoid freeze / thaw cycles. Buffer: PBS with 50% glycerol, pH7.4.
Storage	Store at -20°C

## Application Details

WB □ 1:500 - 1:2000

## Images



Western blot analysis of extracts of SKOV3 cells, using NLRP5 Antibody.

## Background

The protein encoded by this gene belongs to the NALP protein family. Members of the NALP protein family typically contain a NACHT domain, a NACHT-associated domain (NAD), a C-terminal leucine-rich repeat (LRR) region, and an N-terminal pyrin domain (PYD). Expression of this gene is restricted to the oocyte. A mouse gene that encodes a maternal oocyte protein, similar to this encoded protein, is required for normal early embryogenesis.

---

Note: This product is for in vitro research use only and is not intended for use in humans or animals.