

ELF5 Antibody

Catalog No: #34113

Package Size: #34113-1 50ul #34113-2 100ul

Orders: order@signalwayantibody.com

Support: tech@signalwayantibody.com

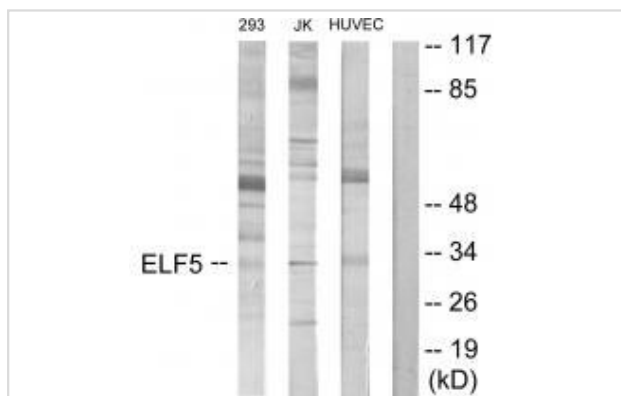
Description

Product Name	ELF5 Antibody
Host Species	Rabbit
Clonality	Polyclonal
Purification	The antibody was affinity-purified from rabbit antiserum by affinity-chromatography using epitope-specific immunogen.
Applications	WB
Species Reactivity	Human;Mouse
Specificity	The antibody detects endogenous levels of total ELF5 protein.
Immunogen Type	Peptide
Immunogen Description	Synthesized peptide derived from internal of human ELF5.
Conjugates	Unconjugated
Target Name	ELF5
Other Names	ETS-related transcription factor Elf-5; E74-like factor 5; Epithelium-specific Ets transcription factor 2; ESE-2; Epithelium-restricted ESE-1-related Ets factor
Accession No.	Swiss-Prot: Q9UKW6NCBI Gene ID: 2001
SDS-PAGE MW	31kd
Concentration	1.0mg/ml
Formulation	Rabbit IgG in phosphate buffered saline (without Mg ²⁺ and Ca ²⁺), pH 7.4, 150mM NaCl, 0.02% sodium azide and 50% glycerol.
Storage	Store at -20°C

Application Details

Western blotting: 1:500~1:3000

Images



Western blot analysis of extracts from 293 cells, Jurkat cells and HUVEC cells, using ELF5 antibody #34113.

Background

Transcriptionally activator that may play a role in regulating the later stages of keratinocytes terminal differentiation. soform 2 binds to DNA sequences containing the consensus nucleotide core sequence GGA[AT]. Transcriptionally activates SPRR2A and the parotid gland-specific PSP promoters.

Taylor T.D., Nature 440:497-500(2006).

Ota T., Nat. Genet. 36:40-45(2004).

Oettgen P., J. Biol. Chem. 274:29439-29452(1999).

Note: This product is for in vitro research use only and is not intended for use in humans or animals.