

## AIM2 Antibody

Catalog No: #34166

Package Size: #34166-1 50ul #34166-2 100ul

Orders: [order@signalwayantibody.com](mailto:order@signalwayantibody.com)Support: [tech@signalwayantibody.com](mailto:tech@signalwayantibody.com)

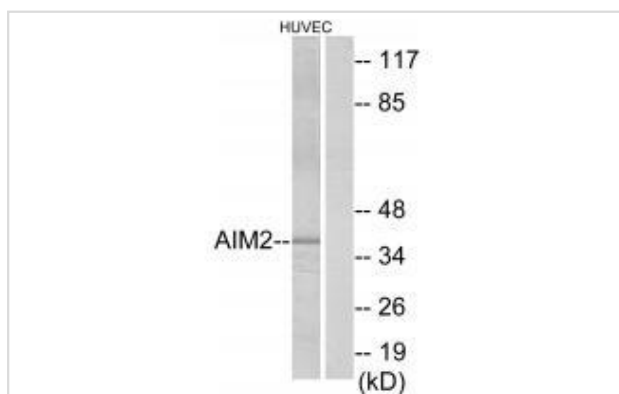
## Description

Product Name	AIM2 Antibody
Host Species	Rabbit
Clonality	Polyclonal
Purification	The antibody was affinity-purified from rabbit antiserum by affinity-chromatography using epitope-specific immunogen.
Applications	WB
Species Reactivity	Hu
Specificity	The antibody detects endogenous levels of total AIM2 protein.
Immunogen Type	Peptide
Immunogen Description	Synthesized peptide derived from internal of human AIM2.
Target Name	AIM2
Other Names	Interferon-inducible protein AIM2; Absent in melanoma 2; AIM2;
Accession No.	Swiss-Prot: O14862NCBI Gene ID: 9447
SDS-PAGE MW	39kd
Concentration	1.0mg/ml
Formulation	Rabbit IgG in phosphate buffered saline (without Mg <sup>2+</sup> and Ca <sup>2+</sup> ), pH 7.4, 150mM NaCl, 0.02% sodium azide and 50% glycerol.
Storage	Store at -20°C

## Application Details

Western blotting: 1:500~1:3000

## Images



Western blot analysis of extracts from HUVEC cells, using AIM2 antibody #34166.

## Background

Involved in innate immune response by recognizing cytosolic double-stranded DNA and inducing caspase-1-activating inflammasome formation in

macrophages. Upon binding to DNA is thought to undergo oligomerization and to associate with PYCARD initiating the recruitment of caspase-1 precursor and processing of interleukin-1 beta and interleukin-18. Detects cytosolic dsDNA of viral and bacterial origin in a non-sequence-specific manner. Can also trigger PYCARD-dependent, caspase-1-independent cell death that involves caspase-8 By similarity. Tumor suppressor which may act by repressing NF-kappa-B transcriptional activity.

DeYoung K.L., *Oncogene* 15:453-457(1997).

Gregory S.G., *Nature* 441:315-321(2006).

---

Note: This product is for in vitro research use only and is not intended for use in humans or animals.